

# Texas Instruments Supplier Inbound Routing Guide



Unofficial Version  
TI Information - Selective Disclosure  
Valid from 10/01/2022 – 7/01/2023

Code Ident 01295	Document number 6523119	Rev Z	Sheet 1 of 79
------------------	----------------------------	-------	---------------

# Contents

- 1. *Statement of Purpose*.....4
- 2. *For Languages Other than English*.....4
  - 2.1. Instructions in languages other than English. .... 4
- 3. *The Texas Instruments Routing Center* .....5
  - 3.1. Routing Center Introduction ..... 5
  - 3.2. Routing Center Contacts ..... 6
  - 3.3. How to request a shipment through the Routing Center. .... 6
- 4. *Shipping Documentation Instructions*.....7
  - 4.1. Required Shipping Documents ..... 7
- 5. *Shipping Instructions*.....8
  - 5.1. Capital Equipment Shipments ..... 9
  - 5.2. Non-Capital Shipments ..... 11
  - 5.3. Hazardous Materials Shipments..... 13
  - 5.4. Expedites ..... 19
  - 5.5. Additional Notes..... 19
- 6. *Spot Bids* .....20
  - 6.1. Spot Bid Process ..... 20
  - 6.2. Spot Quote Form ..... 20
- 7. *Shipping Instructions To Texas Instruments USA Sites* .....21
  - 7.1. Carrier Selection to TI North Texas Sites (Excluding CA and Maine) ..... 21
  - 7.2. Carrier Selection to TI LFAB (Lehi) ..... 24
  - 7.3. Carrier Selection to TI MFAB (Maine) ..... 25
  - 7.4. Carrier Selection to TI Santa Clara (California) ..... 26
  - 7.5. USA Domestic Shipping to Texas Instruments Incorporated (USA Sites): ..... 27
- 8. *Shipping Instructions To Texas Instruments China Sites*.....28
  - 8.1. TI Subcon Shipping Instructions ..... 28
  - 8.2. China Subcon Process Flow ..... 29
  - 8.3. Common Tips for China Imports..... 30
  - 8.4. Chengdu Documents and Customs Instructions..... 31
  - 8.5. China Coastal Region Map ..... 33
  - 8.6. Carrier Selection to TI China Capital (Excluding Chengdu = TI Shanghai and China Subcons) ..... 34

8.7. Carrier Selection to TI China Non-Capital (Excluding Chengdu = TI Shanghai and China Subcons)..... 34

8.8. Carrier Selection to TI China Chengdu Site Capital ..... 37

8.9. Carrier Selection to TI China Chengdu Site Non-Capital ..... 38

9. *Shipping to Texas Instruments Germany* .....40

9.1. Carrier Selection to Texas Instruments Germany..... 40

10. *Shipping to Texas Instruments India PVT LTD* .....42

10.1. Carrier Selection to TI India ..... 42

11. *Shipping to Texas Instruments Japan LTD*.....43

11.1. Carrier Selection to TI Japan..... 43

12. *Shipping to Texas Instruments Malaysia Sites* .....50

12.1. Carrier Selection to TIEM (Melaka)..... 50

12.2. Carrier Selection to TIM (Kuala Lumpur Site)..... 52

13. *Shipping to Texas Instruments Mexico*.....54

13.1. Carrier Selection to TI Mexico ..... 54

14. *Shipping to Texas Instruments Philippines Sites*.....55

14.1. Shipping Instructions to TI Philippines Sites ..... 55

14.2. Carrier Selection to TIPI and TIPC ..... 55

15. *Shipping to Texas Instruments Taiwan* .....63

15.1. Shipping instructions to Texas Instruments Taiwan Limited ..... 63

15.2. Carrier Selection to TI Taiwan ..... 66

*Appendix* .....72

a) Capital Equipment Air Shipment Request Form ..... 72

b) Capital Equipment Ocean Request Form ..... 73

c) Non Capital Equipment Request Form..... 74

e) TI Logistics Site Contacts ..... 76

f) TI Freight Forwarder Names and Abbreviations ..... 77

*Revisions*.....78

## 1. Statement of Purpose

Objective: To provide Texas Instruments' (TI) suppliers and shippers with documented procedures for how to contact the routing center and select carrier/mode for TI paid shipments directly to TI sites. Applicable when TI purchase order's INCOTerms define TI as responsible for freight cost and liability (FCA, EXW, FOB).

Deviation from these outlined instructions must be pre-approved by the TI Logistics team or TI Buyer prior to shipment. Failure to follow the instructions in this guide may result in:

- Refusal of the shipment
- Charge back of excess expenses incurred (premium freight)
- Longer cycle time/delinquent deliveries
- Mis-shipment, customs declaration problems, or product loss/damage

TI will reserve the right to charge back any excess freight costs or damages incurred due to failure to follow the below routing instructions.

This document is regularly reviewed and updated. Printed copies are not revision controlled. Refer to the expiration date on the title page of this document to ensure its validity. The most updated version published by TI is available at <http://wpl.ext.ti.com> (under "Supplier Requirements – Shipping Information") or <https://wpl.ext.ti.com/itc/itc.htm>.

## 2. For Languages Other than English

### 2.1. **Instructions in languages other than English.**

- 2.1.1. Deutsche Sprache: Sollten Sie der Meinung sein diese Anweisungen nicht vollstaendig verstanden zu haben, wenden Sie sich bitte an den auf Ihrer Bestellung genannten Einkaeufer.
- 2.1.2. 中国语言：如果你不明白这些指示，你应该列在您的订单的买家的联系。
- 2.1.3. Dominio del español: Si usted no entiende estas instrucciones, usted debe comunicarse con el comprador indicado en su orden de compra.
- 2.1.4. Wikang Filipino: Kung hindi mo maunawaan ang mga habilin na ito, dapat kang makipag-ugnay sa mamimili na nakalista sa iyong order.
- 2.1.5. Bahasa Melayu: Jika anda tidak memahami arahan ini, anda perlu menghubungi pembeli yang disenaraikan pada pesanan anda.
- 2.1.6. 日本語：あなたがこれらの指示を理解していない場合は、ご注文に記載されている買い手に連絡する必要があります。

3. The Texas Instruments Routing Center



3.1. Routing Center Introduction

Pegasus Logistics Group operates the Texas Instruments Routing Center, and has provided TI with routing services for over 13 years. By providing TI with this valuable service, the Routing Center enables TI visibility over its shipments, ensures suppliers use the correct method of transport for shipping their product to TI, and ensures invoices are paid on time.

**By contacting the Routing Center, suppliers ensure TI policy and protocol are followed, while also giving TI the ability to track the shipment.**

**As of July 1<sup>st</sup>, 2018 The Routing Center operates 365 days during all US and Asia working hours, available by phone or email to initiate shipments and service all TI sites worldwide.**

**So before you ship.....**



**And Contact  
the Routing Center**

3.2. Routing Center Contacts

TI Routing Center Contacts		
Origin Country	e-mail	Toll Free Phone # (in country)
China	<a href="mailto:texasinstruments@pegasuslogistics.com">texasinstruments@pegasuslogistics.com</a>	+4001-200538
Germany		+08001833622
Japan		+00531131364
Malaysia		+1800815749
Mexico		+0018885364534
Philippines		+180011160871
Taiwan		+801147002
United States		+1-800-854-3364
<b>All Others - Non-Toll Free</b>		+1-469-671-0371

- English operational support is available 365 days/yr during US and Asia business hours

3.3. How to request a shipment through the Routing Center.

3.3.1. Call or email the Routing Center using the above contact information.

3.3.2. Provide all required shipping information as shown on the appropriate Shipping Request Form.

3.3.2.1. **Shipping Request Forms**

**Capital Equipment Request Form**

Link to Document: [Request Form](#)

View in Appendix

**Ocean Shipment Capital Request Form**

Link to Document: [Request Form](#)

View in Appendix

**Non-Capital Shipping Request Form**

Link to Document: [Request Form](#)

View in Appendix

#### 4. Shipping Documentation Instructions

##### 4.1. Required Shipping Documents

**THE BELOW INFORMATION IS NOT DEFINITIVE!**

Additional information may be needed depending on the country.

Please consult with a customs expert for that region for more information

- \* U.S. Customs requires additional information. Please see separate U.S. Invoice Requirements document.  
[US Import Invoice Requirements](#)
- \* China Customs requires additional information. Please see separate China document requirements.  
<http://routing.ext.ti.com>

4.1.1. Commercial Invoice. The following information **must be indicated** in the commercial invoice:

- 4.1.1.1. Shipper's name and address
- 4.1.1.2. Consignee's name and address
- 4.1.1.3. Invoice number and date
- 4.1.1.4. **TI's purchase order number and purchase order line item number**
- 4.1.1.5. TI's part number (if applicable), description, quantity, unit price, total price, currency, and HTS number
- 4.1.1.6. Inco-term, payment terms
- 4.1.1.7. Country of origin

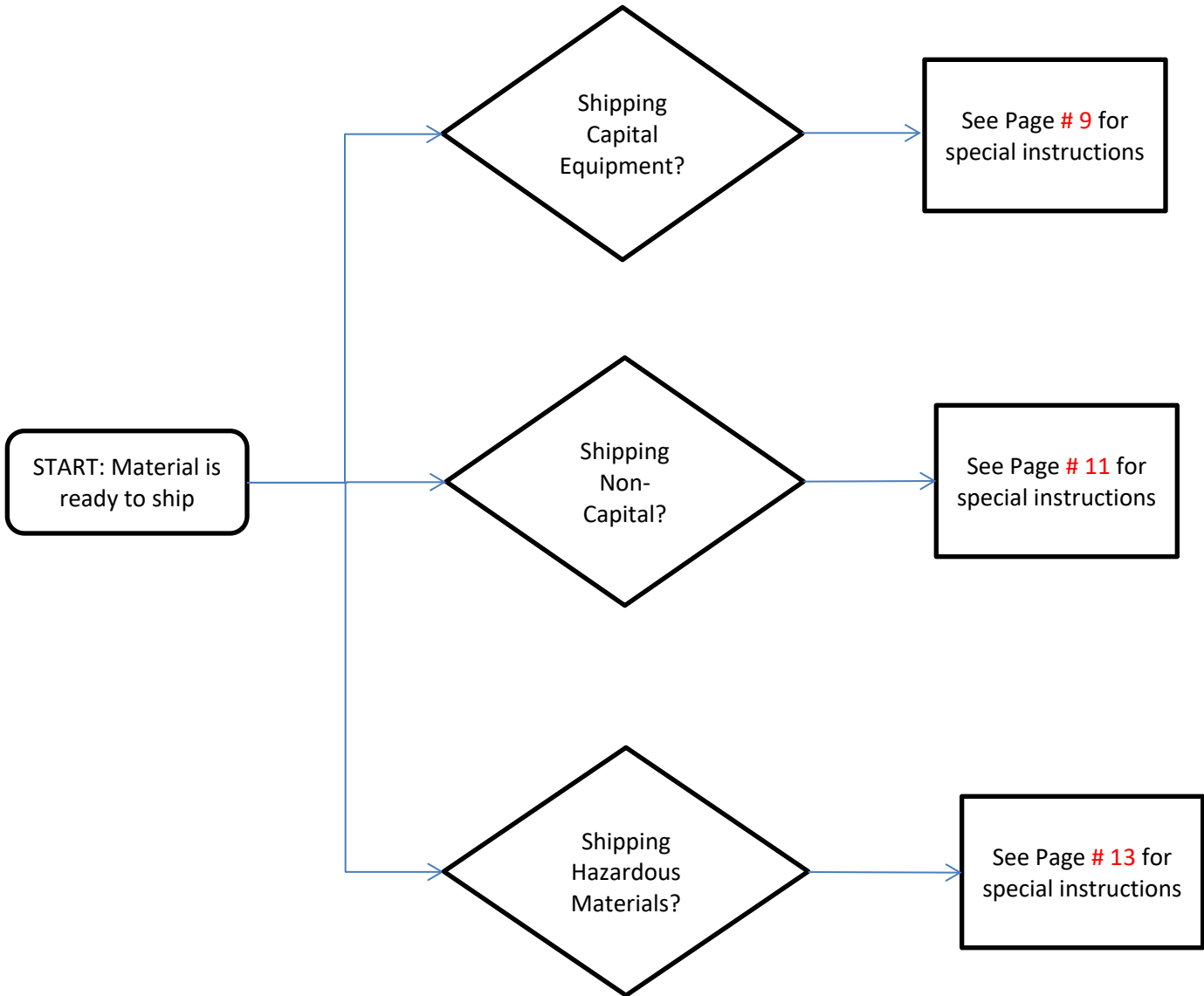
4.1.2. Packing Lists. The packing list **must include** the following information:

- 4.1.2.1. Shipper's name and address
- 4.1.2.2. Consignee's name and address
- 4.1.2.3. Number of cartons, net weight for each item and gross weight for each carton
- 4.1.2.4. Carton contents, material name, quantity, and dimensional measurement

4.1.3. Air Way Bill (AWB) or Bill of Lading (BOL). When the AWB or BOL is prepared by the shipping supplier, the following information **must be indicated** as reference in the AWB or BOL:

- 4.1.3.1. **TI's purchase order number** and purchase order line item number
- 4.1.3.2. Number of cartons, Gross weight, Chargeable weight, quantity, dimensional measurement of each carton
- 4.1.3.3. Additionally, cartons must be clearly labeled to identify the contents
- 4.1.3.4. Packing list and Commercial invoice should accompany the AWB or BOL
- 4.1.3.5. TI Premium freight authorization number, if applicable

5. Shipping Instructions





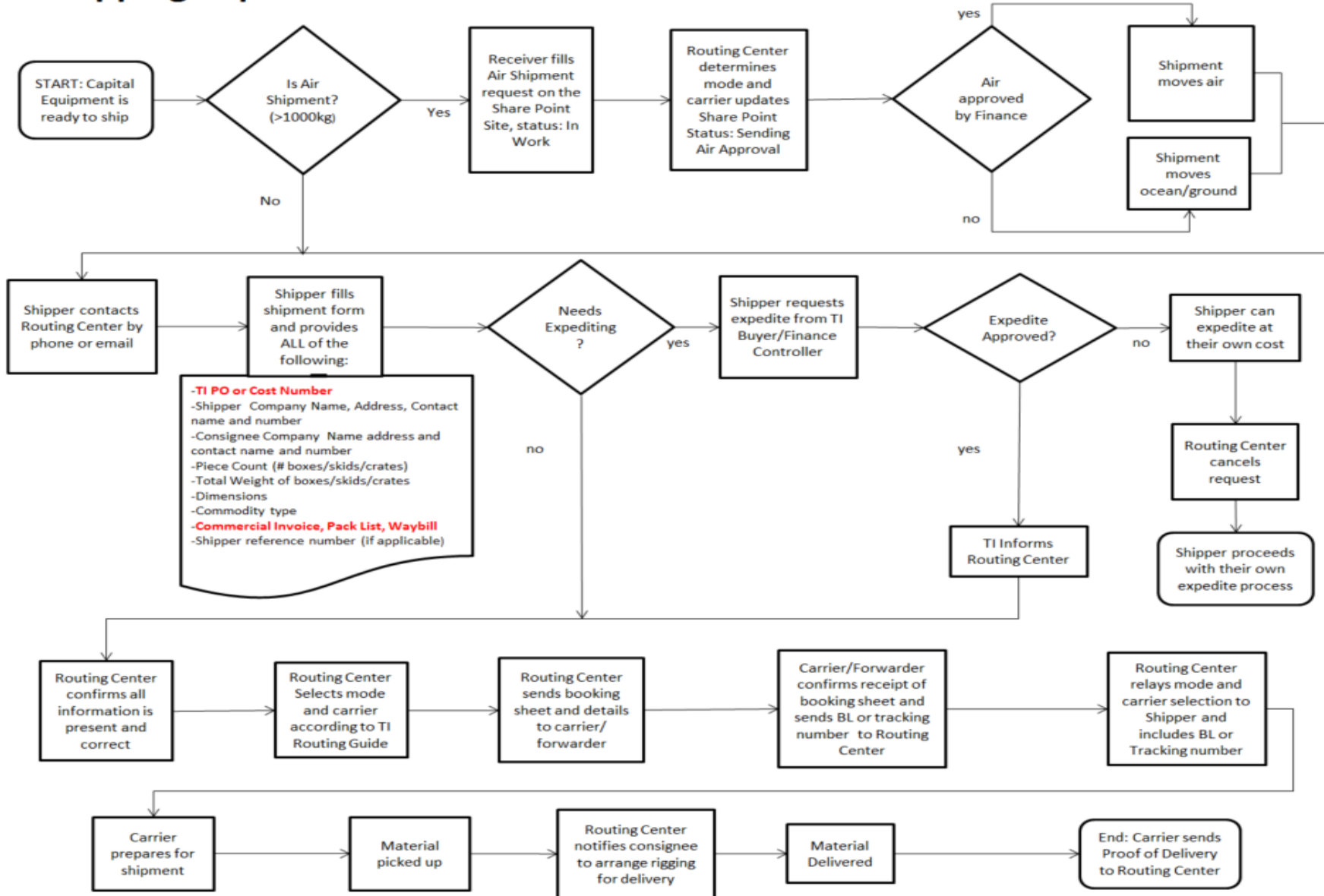
## 5.1. Capital Equipment Shipments

- 5.1.1.1. Shipper is **required** to obtain shipping instructions by contacting the TI Routing Center (see contacts below) prior to releasing shipment. This is not applicable if supplier is responsible for transportation per INCOTerms.
- 5.1.1.2. Capital equipment suppliers are **recommended** to confirm planned logistics mode, with the TI destination, upon receipt of purchase order for manufacturing and shipment scheduling purposes (i.e., ocean versus air freight).
- 5.1.1.3. **Crating**  
See the [Equipment Crating Instructions & Checklist](#) for specific instructions for capital equipment crating.
- 5.1.1.4. Capital equipment over 1000kgs must have an air approval shipment request filed

### 5.1.2. Capital Equipment Contact Information

Shawn Rogers: TMG Transportation Manager  
Email: [tmgtransportation@list.ti.com](mailto:tmgtransportation@list.ti.com) - TMG Transportation Team  
Office (USA): +1 214-479-4220

Shipping Capital Process Flow



## 5.2. Non-Capital Shipments

### 5.2.1. Packing and Labeling

Without proper packing and labeling some shipments may not be picked up or delivered by carriers! Read the [TI Supplier Packing and Labeling Manual](#) and [ATE \(Automated Test Equipment Packing Spec.](#) for details (Especially for raw wafers and test probes!)

### 5.2.2. Raw Silicon Wafer Shipments

Shipping supplier is **required** to obtain shipping instructions by contacting the TI Routing Center (see contacts below) prior to releasing shipment. This is not applicable if supplier is responsible for transportation per INCOterms.

### 5.2.3. Work in Progress Wafer Shipments

Shipments for Work in Progress (WIP) wafers must follow TI wafer packaging specifications.

**Wafers cannot be shipped as loose cartons**

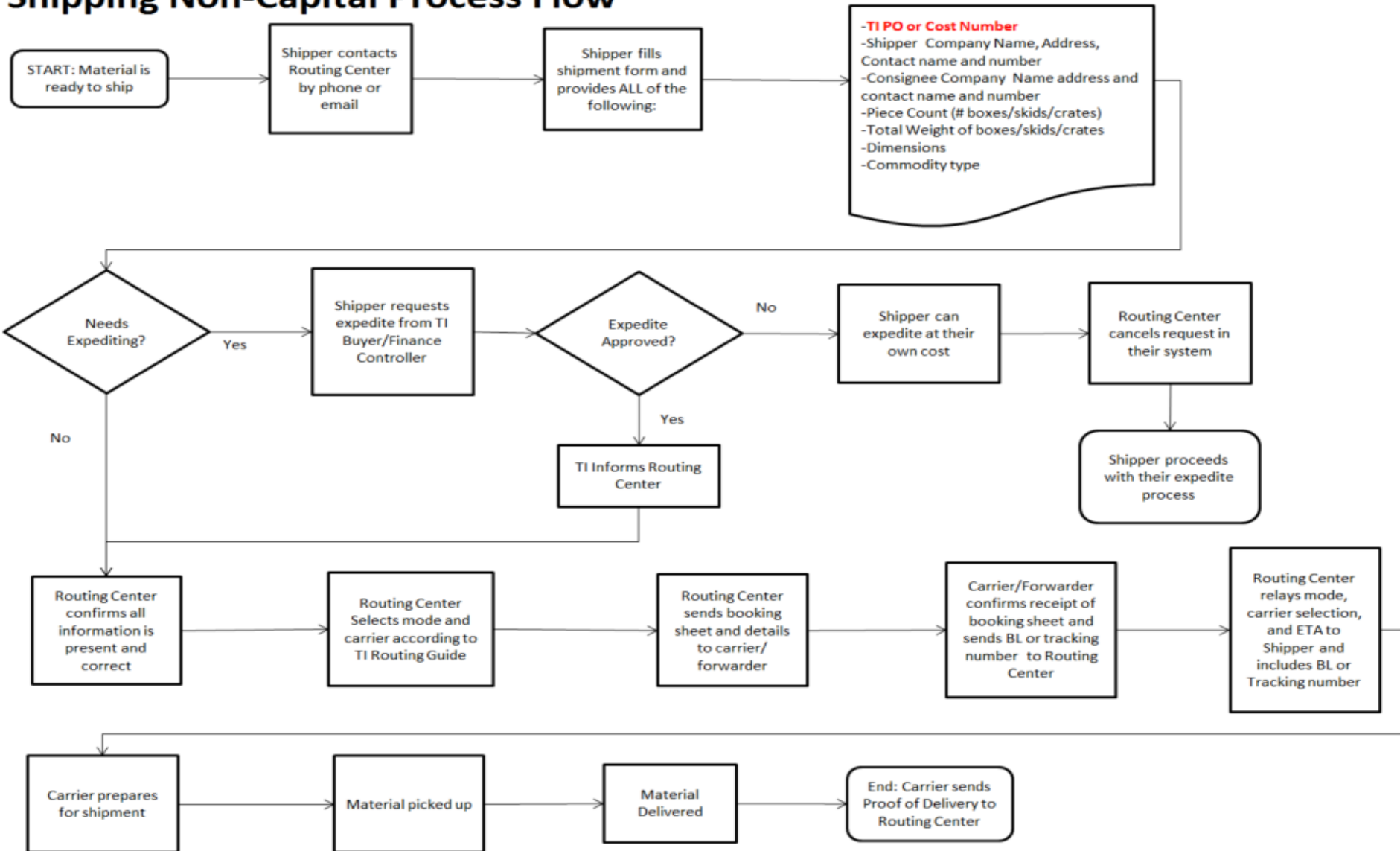
-Shipments must be:

- Palletized with shrink wrap and corner protectors
- Wafer Carton within larger box with dunnage
- Packed in High-top or Gaylord with no empty space (empty boxes can fill additional volume)

### 5.2.4. Non-Capital Contact Information

Email: [tmgtransportation@list.ti.com](mailto:tmgtransportation@list.ti.com) - TMG Transportation Team  
Office (USA): +1 214-479-8175

Shipping Non-Capital Process Flow



## 5.3. Hazardous Materials Shipments

### 5.3.1. Carrier Selection for Hazardous Materials

Carrier Contact: Destinations								
Origin Country	Dest. Country	Commodity	Weight Break	Mode	Carrier	Name	Phone	e-mail
China	China	Chemicals and Gas	All	ground	DB Schenker	Kevin Liu	+86-028-86587760	<a href="mailto:Kevin.Liu@dbschenker.com">Kevin.Liu@dbschenker.com</a>
China	China	Chemicals and Gas	All	ground	DB Schenker	Kevin Liu	+86-028-86587760	<a href="mailto:Kevin.Liu@dbschenker.com">Kevin.Liu@dbschenker.com</a>
ALL	Germany	Hazardous	NA	<b>DDP only</b>	-	-	-	-
China	Malaysia	Epoxy	NA	Air	SCF	Sany	6019-266 7775	sany@scforce.com/ Kulimport@scforce.com
France	Malaysia	Chemical, Other Dangerous Goods	<1000kgs	Air	DGF	Sophie Joyeuse	+33 01 49 19 69 95	<a href="mailto:SOPHIE.JOYEUSE@DHL.COM">SOPHIE.JOYEUSE@DHL.COM</a>
Germany	Malaysia	Chemical, Other Dangerous Goods	<1000kgs	Air	DGF	N/A	+49 (69) 1301-6000	<a href="mailto:DHL-DE-CUSTOMERSUPPORT@DHL.COM">DHL-DE-CUSTOMERSUPPORT@DHL.COM</a>
Israel	Malaysia	Chemical, Other Dangerous Goods	<1000kgs	Air	DGF	Uri Sirkis	+972-54-5246505	<a href="mailto:URI.SIRKIS@DHL.COM">URI.SIRKIS@DHL.COM</a>

# Texas Instruments

# Semiconductor Operations

Other-Asia	Malaysia	Chemical, Other Dangerous Goods	<500kgs	Air	KWE	Marilyn Alberto	63-02-8553502	<a href="mailto:Marilyn.Alberto@ao.kwe.com">Marilyn.Alberto@ao.kwe.com</a>
Other-Asia	Malaysia	Chemical, Other Dangerous Goods	>500kgs	Ocean	KWE	Frank Li	+1 214 717 3087	<a href="mailto:frank.li@kwe.com.cn">frank.li@kwe.com.cn</a>
Other-Europe	Malaysia	Chemical, Other Dangerous Goods	<1000kgs	Air	DGF	Raphael Chin-Fo-Sieeuw	+31 645342580	<a href="mailto:raphael.chin-fo-sieeuw@dhl.com">raphael.chin-fo-sieeuw@dhl.com</a>
Other-Europe	Malaysia	Chemical, Other Dangerous Goods	>1000kgs	Ocean	KWE	Frank Li	+1 214 717 3087	<a href="mailto:frank.li@kwe.com.cn">frank.li@kwe.com.cn</a>
Central/South America	Malaysia	Chemical, Other Dangerous Goods	<1000kgs	Air	DGF	-----	1 469 586-3600	-
Central/South America	Malaysia	Chemical, Other Dangerous Goods	>1000kgs	Ocean	KWE	Frank Li	+1 214 717 3087	<a href="mailto:frank.li@kwe.com.cn">frank.li@kwe.com.cn</a>

# Texas Instruments

# Semiconductor Operations

Central/South America	Malaysia	General Commodity	<1000kgs	Air	DGF	----	1 469 586-3600	-
United Kingdom	Malaysia	Chemical, Other Dangerous Goods	<1000kgs	Air	DGF	N/A	+44 020 8754 5000	<a href="mailto:DGFSOUTH.SALES@DHL.COM">DGFSOUTH.SALES@DHL.COM</a>
United States - Eastern/Pacific	Malaysia	Chemical, Other Dangerous Goods	<1000kgs	Air	DGF	----		<a href="http://www.dhl-dgf.com/offices/offices.cgi?C=US">http://www.dhl-dgf.com/offices/offices.cgi?C=US</a>
United States - Eastern/Pacific	Malaysia	Chemical, Other Dangerous Goods	>1000kgs	Ocean	KWE	Frank Li	+1 214 717 3087	<a href="mailto:frank.li@kwe.com.cn">frank.li@kwe.com.cn</a>
United States - Eastern/Pacific	Malaysia	General Commodity	<1000kgs	Air	DGF	----		<a href="http://www.dhl-dgf.com/offices/offices.cgi?C=US">http://www.dhl-dgf.com/offices/offices.cgi?C=US</a>
United States - Mountain/Central	Malaysia	Chemical, Other Dangerous Goods	<2000kgs	Air	DGF	----		<a href="http://www.dhl-dgf.com/offices/offices.cgi?C=US">http://www.dhl-dgf.com/offices/offices.cgi?C=US</a>
United States - Mountain/Central	Malaysia	Chemical, Other Dangerous Goods	>2000kgs	Ocean	KWE	Frank Li	+1 214 717 3087	<a href="mailto:frank.li@kwe.com.cn">frank.li@kwe.com.cn</a>
United States - Mountain/Central	Malaysia	General Commodity	<2000kgs	Air	DGF	----		<a href="http://www.dhl-dgf.com/offices/offices.cgi?C=US">http://www.dhl-dgf.com/offices/offices.cgi?C=US</a>

# Texas Instruments

# Semiconductor Operations

United States	Philippines	Magnetic			FedEx express			
United States	Philippines	Chemical	ALL	Ocean	KWE	Wayne Tominaga	1-310-667-4510	<a href="mailto:wayne.tominaga@am.kwe.com">wayne.tominaga@am.kwe.com</a>
Japan	Taiwan	Mold Compound	<1000kgs	Air	KWE	Kathy Lin	886-3-262-5990 #3342	<a href="mailto:kathy.lin@kwe.com">kathy.lin@kwe.com</a>
Japan	Taiwan	Mold Compound	>=1000kgs	Ocean	Expeditors	Peter Sung Mchale Lee Ethan Liang	886-953-306-357 /886-963-271-959 /886-978-902-122	Peter Sung < <a href="mailto:Peter.Sung@expeditors.com">Peter.Sung@expeditors.com</a> >; Mchale Lee < <a href="mailto:Mchale.Lee@expeditors.com">Mchale.Lee@expeditors.com</a> >; Ethan Liang < <a href="mailto:Ethan.Liang@expeditors.com">Ethan.Liang@expeditors.com</a> >
Malaysia	Taiwan	Mold Compound	<1000kgs	Air	KWE	Kathy Lin	886-3-262-5990 #3342	<a href="mailto:kathy.lin@kwe.com">kathy.lin@kwe.com</a>
China-PVG	Taiwan	Epoxy	<1000kgs	Air	DGF	Gloria Sun Marinda Yen Rachel Hwang	886-3-3932558 #201 886-2-6603-8100 886-927-900-678 886-2-6603-8160	<a href="mailto:gloria.sun@dhl.com">gloria.sun@dhl.com</a> <a href="mailto:Marinda.Yen@dhl.com">Marinda.Yen@dhl.com</a> <a href="mailto:rachel.hwang@dhl.com">rachel.hwang@dhl.com</a>
China	Taiwan	Mold Compound	>=1000kgs	Ocean	Expeditors	Peter Sung Mchale Lee Ethan Liang	886-953-306-357 886-963-271-959 886-978-902-122	Peter Sung < <a href="mailto:Peter.Sung@expeditors.com">Peter.Sung@expeditors.com</a> >; Mchale Lee < <a href="mailto:Mchale.Lee@expeditors.com">Mchale.Lee@expeditors.com</a> >; Ethan Liang < <a href="mailto:Ethan.Liang@expeditors.com">Ethan.Liang@expeditors.com</a> >
Malaysia	Taiwan	Mold Compound	>=1000kgs	Ocean	Expeditors	Peter Sung Mchale Lee Ethan Liang	886-953-306-357 /886-963-271-959 /886-978-902-122	Peter Sung < <a href="mailto:Peter.Sung@expeditors.com">Peter.Sung@expeditors.com</a> >; Mchale Lee < <a href="mailto:Mchale.Lee@expeditors.com">Mchale.Lee@expeditors.com</a> >; Ethan Liang < <a href="mailto:Ethan.Liang@expeditors.com">Ethan.Liang@expeditors.com</a> >
United States - Eastern & Pacific	Taiwan	temperature control material with dry ice	<=1000kgs	Air	KWE	Kathy Lin	886-3-262-5990 #3342	<a href="mailto:kathy.lin@kwe.com">kathy.lin@kwe.com</a>
United States	United States	Battery	Small Pack	Air	FedEx			

Code Ident **01295**

Document number

**6523119**

Rev **Z**

Sheet 16 of 79

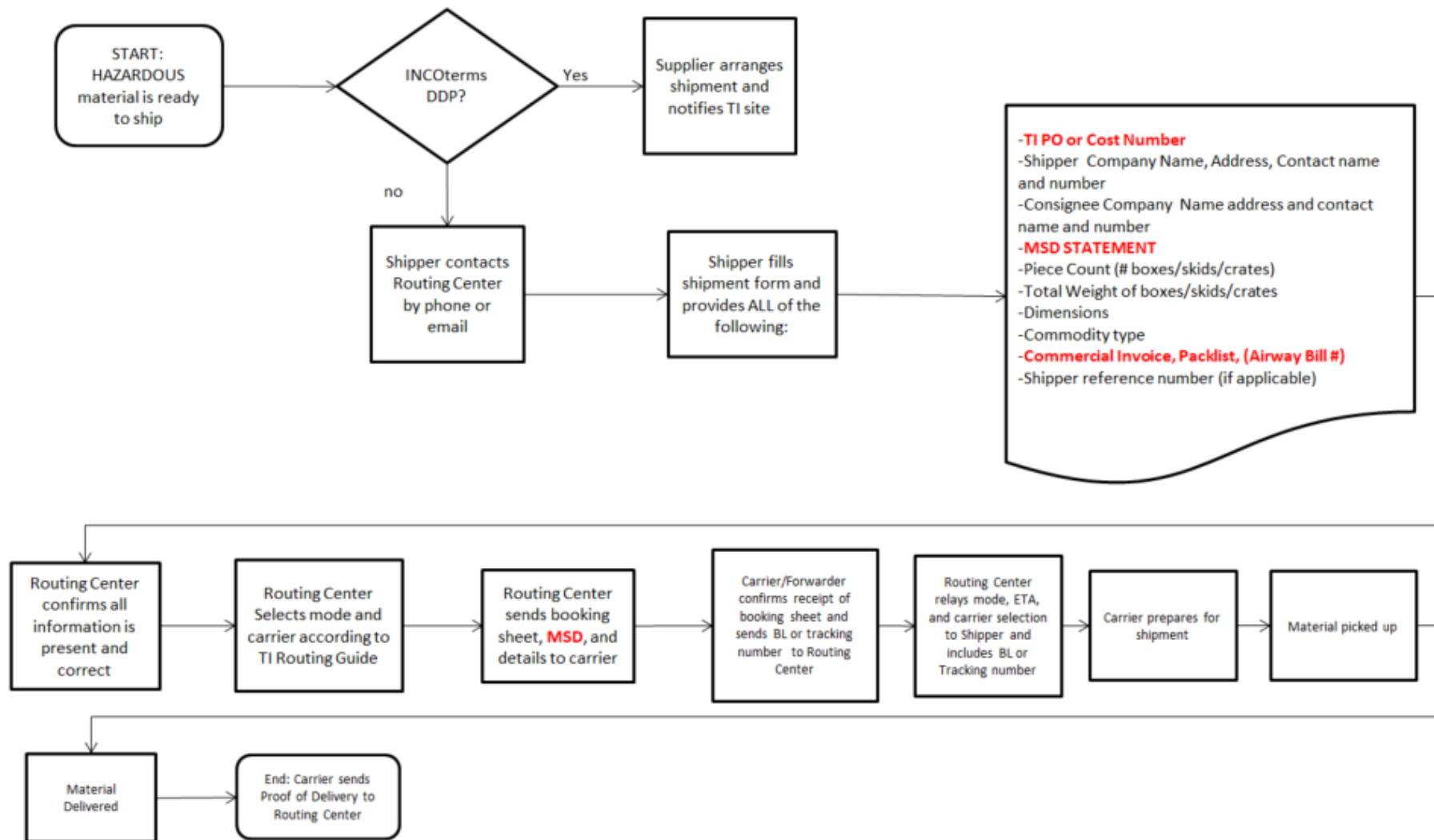


# Texas Instruments

# Semiconductor Operations

United States	United States	Other		Ground	Texas Moving			
China - Coastal cities	Taiwan	General Commodity (Temperature control)	<1000k gs	Air	DGF	Gloria Sun Marinda Yen Rachel Hwang	886-3-3932558 #201 886-2-6603-8100 886-927-900-678 886-2-6603-8160	gloria.sun@dhl.com Marinda.Yen@dhl.com rachel.hwang@dhl.com
China - Coastal cities	Taiwan	General Commodity (Temperature control)	<1000k gs	Air	DGF	Gloria Sun Marinda Yen Rachel Hwang	886-3-3932558 #201 886-2-6603-8100 886-927-900-678 886-2-6603-8160	gloria.sun@dhl.com Marinda.Yen@dhl.com rachel.hwang@dhl.com
Japan	Taiwan	General Commodity (Temperature control)	<1000k gs	Air	KWE	Kathy Lin Abigail Yuan	886-3-262-5990 #3342 886-3-262-5990 #3362	<a href="mailto:kathy.lin@kwe.com">kathy.lin@kwe.com</a> <a href="mailto:abigail.yuan@kwe.com">abigail.yuan@kwe.com</a>
Korea	Taiwan	General Commodity (Temperature control)	<1000k gs	Air	KWE	Kathy Lin Abigail Yuan	886-3-262-5990 #3342 886-3-262-5990 #3362	<a href="mailto:kathy.lin@kwe.com">kathy.lin@kwe.com</a> <a href="mailto:abigail.yuan@kwe.com">abigail.yuan@kwe.com</a>
Malaysia	Taiwan	General Commodity (Temperature control)	<1000k gs	Air	KWE	Kathy Lin Abigail Yuan	886-3-262-5990 #3342 886-3-262-5990 #3362	<a href="mailto:kathy.lin@kwe.com">kathy.lin@kwe.com</a> <a href="mailto:abigail.yuan@kwe.com">abigail.yuan@kwe.com</a>

### Shipping Hazardous Materials Process Flow



5.4. **Expedites**

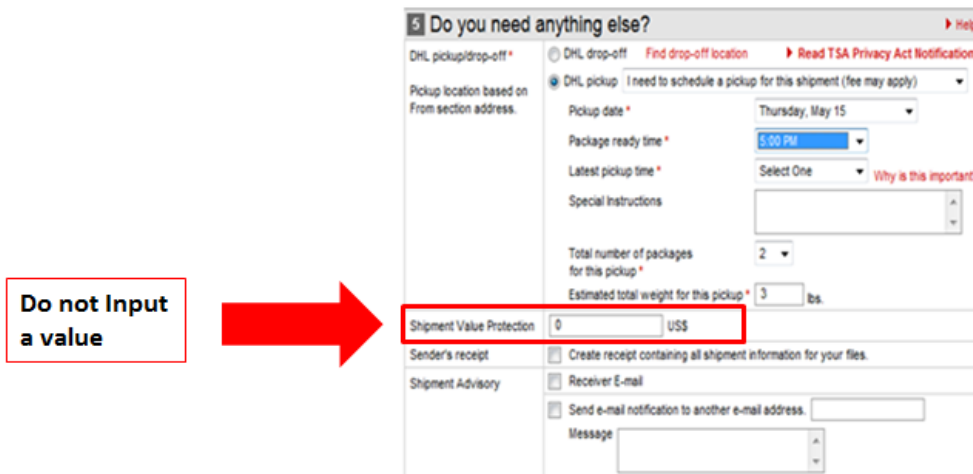
5.4.1. Shippers wishing to expedite when TI is responsible for transportation per INCOTerms **must request expedite approval** from the TI Buyer/ Receiver/Finance Control to gain approval.

If approved the TI party is responsible to notify the Routing Center and the Routing Center will carry out the expedite.

Failure to obtain and document authorization number as a reference number on shipment’s bill of lading may result in TI not being responsible for expedited freight costs.

5.5. **Additional Notes**

- Consolidate daily shipments by ship to location on one bill of lading.
- Shipment quantities shall not exceed the PO’s line item quantities.
- Notify carrier **at least 1 full business day in advance** for pick-ups, otherwise, freight pickup may not always be possible on your requested/scheduled ship day.
- Shipping supplier is expected to recognize and/or confirm transportation cycle times with TI standard service level carrier, and plan accordingly to meet PO delivery date commitments and achieve on time delivery.
- All US inter-domestic inbound shipments paid by TI per PO INCOTerms must be shipped surface unless approved in advance by a TI Worldwide Procurement & Logistics representative and/or the TI Routing Center.
- Deliver to address/destination will be confirmed within the TI Purchase Order (PO).
- Special shipment mode or other requirements to be documented by destination site’s Worldwide Procurement & Logistics organization within PO or other written communication.
- **Do not add shipment Value Protection when using any carrier.**



**6. Spot Bids**

**6.1. Spot Bid Process**

- 6.1.1. Spot bids are needed anytime TI is paying for the freight and TI does not have a rate card in place with the chosen carrier for that origin and destination.
- 6.1.2. Spot bids may be submitted to other carriers to be considered for award.
- 6.1.3. Spot bids must be submitted in the below format with the estimated total cost for the shipment including any destination, customs, or assessorial charges (just providing the rate/kg is not sufficient). All fields must be filled in completely.

**6.2. Spot Quote Form**

\*All fields in yellow are required for Spot Bid Consideration, bid amount including all assessorial fees and related charges

Forwarder	HAWB #	Mode	Capital (Y or N)	Origin	Destination	SAP Ref #/PO/WAYB	Freight Rate/kg	Shipment Weight (kgs)	Total Bid Amount	Bid Currency	Need By Date	Ship Date	Notes: (ex: Oversize)

- 6.2.1. Spot bids can be submitted to the Texas Instruments Routing Center, and to the TI logistics team for the TI site that will be paying for the freight with their procurement head in copy.
- 6.2.2. Spot bids are awarded by the TI logistics and procurement team of the TI site that is paying for the freight.

**7. Shipping Instructions To Texas Instruments USA Sites**

**7.1. Carrier Selection to TI North Texas Sites (Excluding CA and Maine)**

**Inbound to TI North America (Excluding CA and Maine) -  
Capital Equipment**

Carrier Contact: Destinations

Origin Country	Dest. Country	Commodity	Weight Break	Mode	Carrier	Name	Phone	e-mail
China - Coastal	United States	Capital Equipment	<45	Air	FEDEX	Rick Hargett	214-264-2303	fbhargett@fedex.com
China - Coastal	United States	Capital Equipment	45<x<1000	Air	KWE	Jeffrey Butler	(817) 796-7871	<a href="mailto:jeffrey.butler@kwe.com">jeffrey.butler@kwe.com</a>
China - Coastal	United States	Capital Equipment	>1000	Ocean	KWE	Frank Li	N/A	<a href="mailto:Frank.li@kwe.com.cn">Frank.li@kwe.com.cn</a>
China - Non-coastal	United States	Capital Equipment	<45	Air	FEDEX	Rick Hargett	214-264-2303	fbhargett@fedex.com
China - Non-coastal	United States	Capital Equipment	45<x<1000	Air	KWE	Jeffrey Butler	(817) 796-7871	<a href="mailto:jeffrey.butler@kwe.com">jeffrey.butler@kwe.com</a>
China - Non-coastal	United States	Capital Equipment	>1000	Ocean	KWE	Frank Li	N/A	<a href="mailto:Frank.li@kwe.com.cn">Frank.li@kwe.com.cn</a>
Germany	United States	Capital Equipment	<45	Air	DHLe	Mark Medley	877-873-2521 53320	<a href="mailto:mark.medley@dhl.com">mark.medley@dhl.com</a>
Germany	United States	Capital Equipment	45<x<1000	Air	DGF	Ron Crim	(469) 586-3552	-
Germany	United States	Capital Equipment	>1000	Ocean	KWE	Frank Li	N/A	<a href="mailto:Frank.li@kwe.com.cn">Frank.li@kwe.com.cn</a>
Korea	United States	Capital Equipment	<45	Air	FEDEX	Rick Hargett	214-264-2303	fbhargett@fedex.com
Korea	United States	Capital Equipment	45<x<1000	Air	KWE	Jeffrey Butler	(817) 796-7871	<a href="mailto:jeffrey.butler@kwe.com">jeffrey.butler@kwe.com</a>

# Texas Instruments Semiconductor Operations

Korea	United States	Capital Equipment	>1000	Ocean	KWE	Frank Li	N/A	<a href="mailto:Frank.li@kwe.com.cn">Frank.li@kwe.com.cn</a>
Other-Asia	United States	Capital Equipment	<45	Air	FEDEX	Rick Hargett	214-264-2303	fbhargett@fedex.com
Other-Asia	United States	Capital Equipment	45<x<1000	Air	KWE	Jeffrey Butler	(817) 796-7871	<a href="mailto:jeffrey.butler@kwe.com">jeffrey.butler@kwe.com</a>
Other-Asia	United States	Capital Equipment	>1000	Ocean	KWE	Frank Li	N/A	<a href="mailto:Frank.li@kwe.com.cn">Frank.li@kwe.com.cn</a>
Other-Europe	United States	Capital Equipment	<45	Air	DHLe	Mark Medley	877-873-2521 53320	<a href="mailto:mark.medley@dhl.com">mark.medley@dhl.com</a>
Other-Europe	United States	Capital Equipment	45<x<1000	Air	DGF	Gabriela Hamilton	1 469 586 3742	<a href="mailto:gabriela.hamilton@dhl.com">gabriela.hamilton@dhl.com</a>
Other-Europe	United States	Capital Equipment	>1000	Ocean	KWE	Frank Li	N/A	<a href="mailto:Frank.li@kwe.com.cn">Frank.li@kwe.com.cn</a>
UK/Ireland	United States	Capital Equipment	<45	Air	DHLe	Mark Medley	877-873-2521 53320	<a href="mailto:mark.medley@dhl.com">mark.medley@dhl.com</a>
UK/Ireland	United States	Capital Equipment	45<x<1000	Air	DGF	Gabriela Hamilton	1 469 586 3742	<a href="mailto:gabriela.hamilton@dhl.com">gabriela.hamilton@dhl.com</a>
UK/Ireland	United States	Capital Equipment	>1000	Ocean	KWE	Frank Li	N/A	<a href="mailto:Frank.li@kwe.com.cn">Frank.li@kwe.com.cn</a>

# Texas Instruments Semiconductor Operations

## Inbound to TI North America (Excluding CA and Maine) - Non-Capital

Carrier Contact: Destinations

Origin Country	Dest. Country	Commodity	Weight Break	Mode	Carrier	Name	Phone	e-mail
Europe	United States	Non-Capital	<45	Air	DHLe	Mark Medley	877-873-2521 53320	<a href="mailto:mark.medley@dhl.com">mark.medley@dhl.com</a>
Europe	United States	Non-Capital	45<x<1000	Air	DGF	Gabriela Hamilton	1 469 586 3742	<a href="mailto:gabriela.hamilton@dhl.com">gabriela.hamilton@dhl.com</a>
Europe	United States	Non-Capital	>1000	Ocean	KWE	Frank Li	N/A	<a href="mailto:Frank.li@kwe.com.cn">Frank.li@kwe.com.cn</a>
India Interior- Non-coastal	United States	Non-Capital	<45	Air	FEDEX	Rick Hargett	214-264-2303	<a href="mailto:fbhargett@fedex.com">fbhargett@fedex.com</a>
India Interior- Non-coastal	United States	Non-Capital	45<x<1000	Air	KWE	Jeffrey Butler	(817) 796-7871	<a href="mailto:jeffrey.butler@kwe.com">jeffrey.butler@kwe.com</a>
India Interior- Non-coastal	United States	Non-Capital	>1000	Ocean	KWE	Frank Li	N/A	<a href="mailto:Frank.li@kwe.com.cn">Frank.li@kwe.com.cn</a>
India Coastal	United States	Non-Capital	<45	Air	FEDEX	Rick Hargett	214-264-2303	<a href="mailto:fbhargett@fedex.com">fbhargett@fedex.com</a>
India Coastal	United States	Non-Capital	45<x<1000	Air	KWE	Jeffrey Butler	(817) 796-7871	<a href="mailto:jeffrey.butler@kwe.com">jeffrey.butler@kwe.com</a>
India Coastal	United States	Non-Capital	>1000	Ocean	KWE	Frank Li	N/A	<a href="mailto:Frank.li@kwe.com.cn">Frank.li@kwe.com.cn</a>
Japan	United States	Non-Capital	<45	Air	Primary: Nippon Backup: DGF	TBD	TBD	TBD
Japan	United States	Non-Capital	>45	Air	Primary: Expeditors Backup: Nippon	TBD	TBD	TBD
Central/South America	United States	Non-Capital	<45	Air	DHLe	Mark Medley	877-873-2521 53320	<a href="mailto:mark.medley@dhl.com">mark.medley@dhl.com</a>
Central/South America	United States	Non-Capital	45<x<1000	Air	DGF	Gabriela Hamilton	1 469 586 3742	<a href="mailto:gabriela.hamilton@dhl.com">gabriela.hamilton@dhl.com</a>
Central/South America	United States	Non-Capital	>1000	Ocean	KWE	Frank Li	N/A	<a href="mailto:Frank.li@kwe.com.cn">Frank.li@kwe.com.cn</a>

# Texas Instruments

# Semiconductor Operations

Other-Asia	United States	Non-Capital	<45	Air	FEDEX	Rick Hargett	214-264-2303	fbhargett@fedex.com
Other-Asia	United States	Non-Capital	45<x<1000	Air	KWE	Jeffrey Butler	(817) 796-7871	<a href="mailto:jeffrey.butler@kwe.com">jeffrey.butler@kwe.com</a>
Other-Asia	United States	Non-Capital	>1000	Ocean	KWE	Frank Li	N/A	<a href="mailto:Frank.li@kwe.com.cn">Frank.li@kwe.com.cn</a>
Singapore	United States	Non-Capital	<45	Air	Primary: DHL Backup: KWE	TBD	TBD	TBD
Singapore	United States	Non-Capital	>45	Air	Primary: Expeditors Backup: KWE	TBD	TBD	TBD
Philippines	United States	Non-Capital	<45	Air	Primary: DHL Backup: FedEx	TBD	TBD	TBD
Philippines	United States	Non-Capital	45<x<99	Air	Primary: DHL Backup: K+N	TBD	TBD	TBD
Philippines	United States	Non-Capital	>99	Air	Primary: Expeditors Backup: K+N	TBD	TBD	TBD

## 7.2. Carrier Selection to TI LFAB (Lehi)

Origin Country	Dest. Country	Commodity	Weight Break	Mode	Carrier	Name	Phone	e-mail
Austria	United States	Capital Equipment	N/A	Air	KWE	TBD	TBD	TBD
China	United States	Non-Capital	<2000	Air	KWE	TBD	TBD	TBD
China	United States	Non-Capital	>2000	Ocean	KWE	TBD	TBD	TBD
Czech Republic	United States	Non-Capital	N/A	Air	DBS	TBD	TBD	TBD
Japan	United States	Capital Equipment	N/A	Air/Ocean	KWE	TBD	TBD	TBD
Korea	United States	Capital Equipment	<2000	Air	KWE	TBD	TBD	TBD
Korea	United States	Capital Equipment	>2000	Ocean	KWE	TBD	TBD	TBD



# Texas Instruments Semiconductor Operations

Malaysia	United States	Non-Capital	<2000	Air	KWE	TBD	TBD	TBD
Malaysia	United States	Non-Capital	>2000	Ocean	KWE	TBD	TBD	TBD
Singapore	United States	Capital Equipment	N/A	Air/Ocean	KWE	TBD	TBD	TBD

### 7.3. Carrier Selection to TI MFAB (Maine)

Inbound to TI Maine							Carrier Contact: Destinations	
Origin Country	Dest. Country	Commodity	Weight Break	Mode	Carrier	Name	Phone	e-mail
All	United States	Wafers	n/a	Air	DBS	Brandy Anderson	+1 214 702 7060	<a href="mailto:brandy.anderson@dbuschenker.com">brandy.anderson@dbuschenker.com</a>
Asia	United States	Manufacturing Parts	<150 lbs	Air	FedEx	N/A	N/A	N/A
Asia	United States	Manufacturing Parts	<1000 kgs	Air	KWE			
Asia	United States	Manufacturing Parts	>1000 kgs	Ocean	KWE			
Europe	United States	Silicon	<1000 kgs	Air	JSI	Rob Bennett	+1 (617) 399 6468	<a href="mailto:import.bos@jsilogistics.com">import.bos@jsilogistics.com</a>
Europe	United States	Manufacturing Parts	>1000 kgs	Air/Ocean	JSI	Rob Bennett	+1 (617) 399 6468	<a href="mailto:import.bos@jsilogistics.com">import.bos@jsilogistics.com</a>
Europe	United States	Manufacturing Parts	<1000 kgs	Air	FedEx	N/A	N/A	N/A
Central/South America	United States	Manufacturing Parts	<1000 kgs	Air	FedEx	N/A	N/A	N/A
Korea	United States	Silicon	<1000 kgs	Air	JSI	Kevin Hutchinson Janelle Farrar	+1 (617) 399 1119 +1 617 399 6468	<a href="mailto:khutchinson@jsilogistics.com">khutchinson@jsilogistics.com</a> <a href="mailto:jfarrar@jsilogistics.com">jfarrar@jsilogistics.com</a>

**7.4. Carrier Selection to TI Santa Clara (California)**

7.4.1. Contacts for Shipping Capital assets:

**Domestic:** Randy Gaines 214-567-2206 [r-gaines@ti.com](mailto:r-gaines@ti.com)  
**International:** Stephen Steiniger 2145672536 [ssteini@ti.com](mailto:ssteini@ti.com)  
 capacct@list.ti.com - Capital Accounting Team - Dallas, TX (May contain non-TIers)

**Inbound Materials to Santa Clara**

Origin Country	Dest. Country	Commodity	Weight Break	Mode	Carrier	Name	Phone	e mail
Europe	United States	Wafer/IC's	<150	Air	FedEx	N/A	N/A	N/A
Europe	United States	Miscellaneous	<150	Air	FedEx	N/A	N/A	N/A
Asia	United States	Wafer/IC's	<150	Air	FedEx	N/A	N/A	N/A
Asia	United States	Miscellaneous	<150	Air	FedEx	N/A	N/A	N/A
Central/South America	United States	Wafer/IC's	<150	Air	FedEx	N/A	N/A	N/A
Central/South America	United States	Miscellaneous	<150	Air	FedEx	N/A	N/A	N/A

**Contacts for the Routing Center**

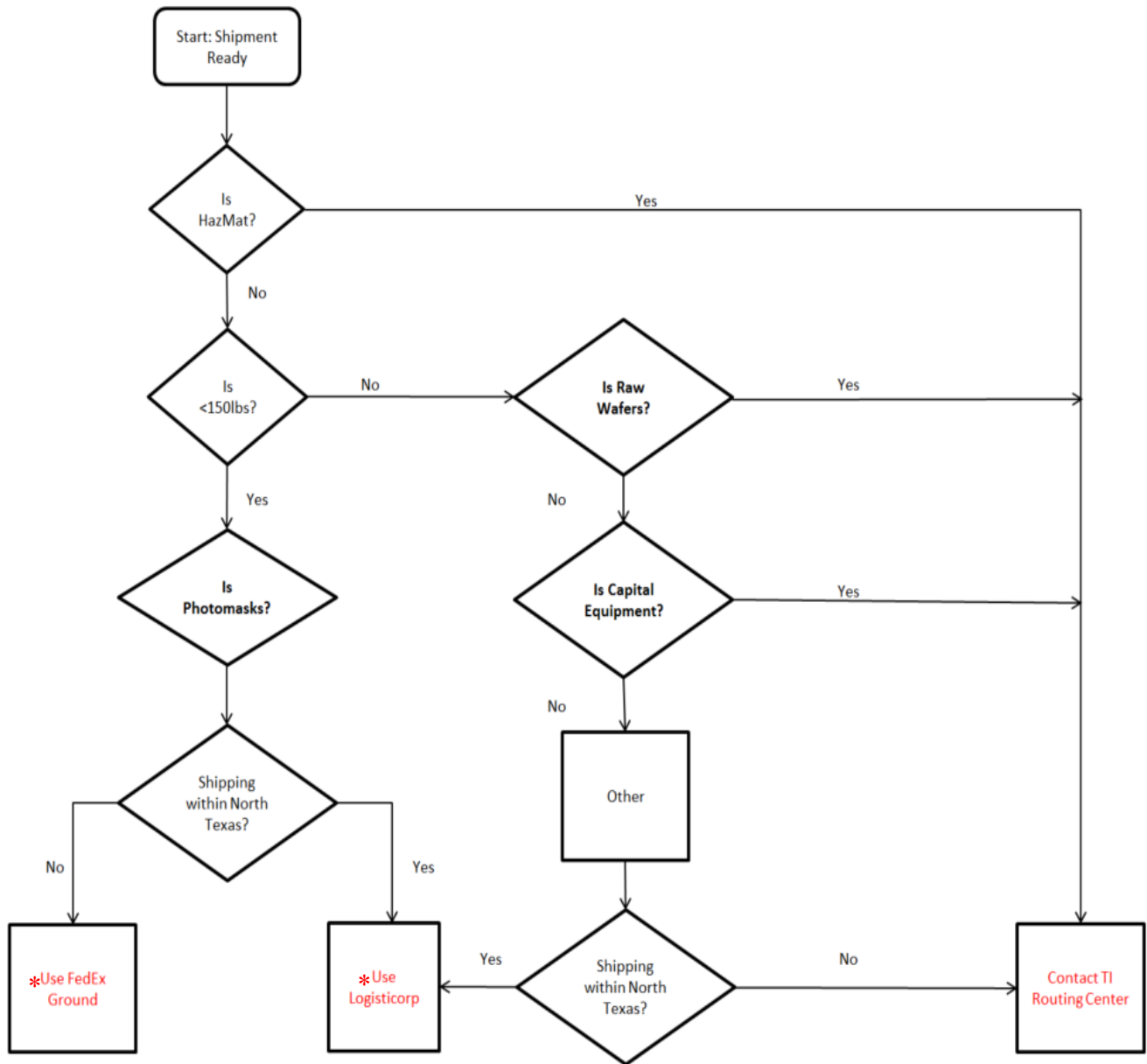
Name	Email	Phone Number
John Epperson	<a href="mailto:john.epperson@ti.com">john.epperson@ti.com</a>	669-721-3401
Shawn Rogers	<a href="mailto:s-rogers2@ti.com">s-rogers2@ti.com</a>	214-479-4220

7.5. USA Domestic Shipping to Texas Instruments Incorporated (USA Sites):

USA carrier contact information:

- TI Routing Center: 1-800-854-3364
- FedEx Ground: [www.fedex.com/us/ground](http://www.fedex.com/us/ground) (Contact TI Routing Center for account number)
- Logisticorp: 1-214-882-5423

Domestic USA Routing



\* For assistance with these shipping methods contact the routing center.

## 8. Shipping Instructions To Texas Instruments China Sites

### 8.1. TI Subcon Shipping Instructions

- Subcon shipments need Pre-Shipment Verification to prevent customs violations from equipment suppliers by validating the content of shipment and necessary documents prior to shipment

#### Checklist:

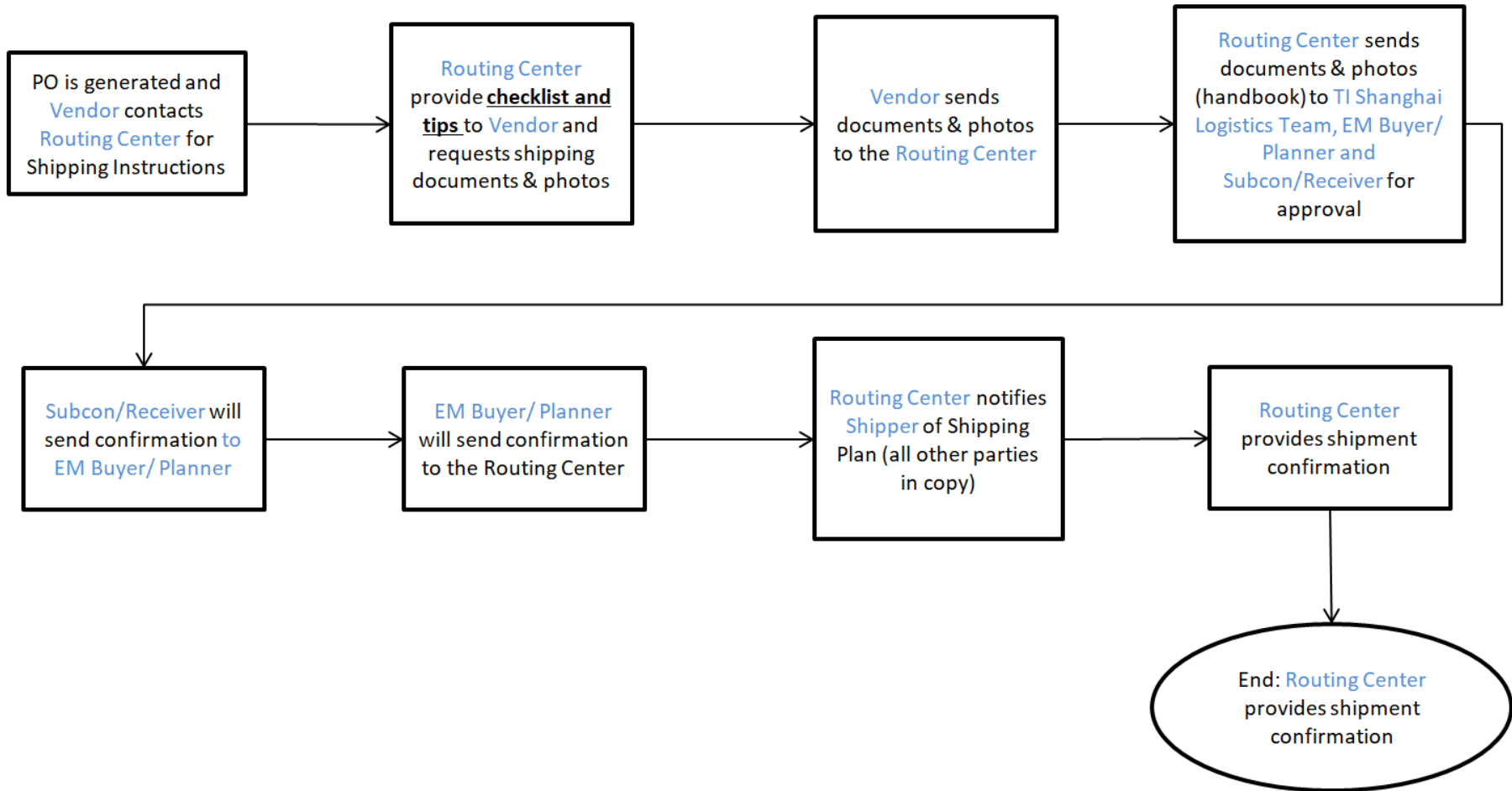
- ✓ Does the Equipment shipment have a TI PO #.
- ✓ Is PO # is listed in the Invoice document.
- ✓ Is PO # is listed in the packing list.
- ✓ Is Net weight AND Gross weight are listed in packing list
- ✓ Is Country of origin (manufactured) listed in packing list
- ✓ Is P/N listed in the packing list
- ✓ Are P/N, description, and QTY in the invoice match PO
- ✓ Are installation tools shipped with equipment
- ✓ Are installation tools declared separately for return.
- ✓ Are parts of the equipment shipped separate for installation at TI.
- ✓ Are parts of the equipment to be installed at TI listed in the packing list.
- ✓ Are Wooden Crate/Pallet material classified correctly (Plywood vs. other)
- ✓ What other parts are shipped in the crate?
- ✓ Any spare parts in the crate? DO NOT SEND w/ EQUIPT.
- ✓ Is the equipment considered used/refurbished/repaired?
- ✓ Does the content of crate match the PO EXACTLY?

#### If spare parts have been shipped with the equipment:

- ✓ Is there a separate PO# (ZVPO) for the parts
- ✓ Are separate Invoice and Packing list provided
- ✓ Is the PO listed in the Invoice
- ✓ Is the PO listed in the Packing list
- ✓ Is the net weight AND Gross weight listed in
- ✓ Is the country of origin (manufactured) listed separately
- ✓ Are pictures provided with these spare parts.
- ✓ Are P/Ns listed in the packing list
- ✓ Does it match our PO description?
- ✓ Any spare parts considered used /repaired / refurbished?
- ✓ Does the content of crate match exactly the PO?
- ✓ Does parts number marked on parts/parts package?
- ✓ Have you conducted pre-shipment teleconference with TI?

8.2. China Subcon Process Flow

Shipments to China Subcons Process Flow



### 8.3. Common Tips for China Imports

- **COO 原产国**

COO is country of original, not country of ship from

COO 指原产国，而不是此次运输的始发地。

Please list COO for every single line item on invoice

请在发票上逐一为每一个项目标注原产国信息

If there is "Made In \*\*\*(country name)" information on parts name plate, make sure the COO is same as that

如果在设备/备件铭牌上有"\*\*(国家/地区名) 制造"信息，请确保发票上原产国信息与此一致

- **Net weight /Gross weight 净重/毛重**

Net weight is only parts self-weight, do not include any packing material weight

净重为备件自身重量，不包含任何包装材料重量

Please list net weight for every single line item on packing list

请在箱单上逐一为每一个项目标注净重

Gross weight is total weight include parts and packing materials

毛重为备件自身及包装材料的总重量

Only need to provide whole shipment package gross weight

仅提供整票货物的毛重信息

Ensure the accuracy of weight information, 确保重量信息准确

- **Quantity and Price 数量与价格**

Make sure the parts quantity on invoice/packing list are exactly match with physical shipping goods, the discrepancy is considered as violation.

确保发票/箱单上所列备件数量与实际运输数量完全一致，单货不一致将被视为违规。

Free sample is also required to list and declare, the declared value should be the true value of item and list on invoice, not 0.

即使为免费样品，也同样要求被列出并申报。申报价格应为货物的实际价值并列在发票中，而非 0 价格。

- **Photo 照片**

Please provide photos of your goods with shipping documents as below: 请提供以下货物照片

Name plate of equipment/parts number label

设备铭牌或零备件料号标签

Outer package of goods after crating

打包完成后的整体外观照片

- **Component List 套件清单**

If the declared items is 1 set, but cannibalized to multiple components during delivery, component list is required for customs declaration purpose

如果申报货物为整套，但被拆分为不同的组件以便运输，则需要提供套件清单用于报关

Please fill out component list information in below table and provide to TI Subcon with invoice/packing list.

请使用以下的套件清单模板填写套件信息，并随发票/箱单提供给德州仪器代加工厂

• **Others 其他**

Please add HTS code of items on invoice by items.

请在发票中列明每个项目的税号/商品编码

Please remark packing material type on packing list. If it's wooden package, it must be fumigated

请在箱单上注明包装材料材质。如果为木质包装，则必须经过熏蒸。

8.4. Chengdu Documents and Customs Instructions

**Key Attention:**

- This shipping instruction applies to equipment, parts and material purchase
- No PO, No Service
- Free Sample also need to go Customs Clearance process and have PO to cover
- All non-personal material/parts/tool for production must go through Custom Declaration Process. Hand Carry business item in & out TICD is not allowed.
- Please have accurate net weight/gross weight/quantity/price information on packing list or invoice for China customs declaration process. Error information may cause customs violation case and impact the shipment/payment.
- Used equipment/spare parts need to go through China Inspection & Quarantine process and get approval before shipment. On-site inspection at shipping site may be required. Please notice TI Chengdu customs affairs before shipment if the equipment/parts are used.
- Please make sure the PO and price for Custom clearance invoice is correct, Or TI can't make payment to your company.
- Please contact w/ procurement for any business related.

		現地輸入用	
<b>COMMERCIAL INVOICE (INTERCOMPANY)</b>			
		PAGE 2 OF 2	
		Invoice Number 5407285802	Invoice Date 2016/12/19
<b>Comments</b>			
AIZU GW:5.66kg NW:3.92kg CTN:1		← Gross weight, Net weight and carton quantity shown	
<b>MATERIALS</b>		<b>QTY</b>	<b>CPW CHIPS</b>
G4N35303SA0-WUP	G4E0/5303SA000	6	4465 26790
G4N35309SA0-WUP	G4E0/5309SA000	6	6374 38244
		↑	↑
		Both wafer pcs quantity and chips quantity	

Code

31 of 79

**Import/Export related**

- **All goods must go through Customs.** Please send the related documents to the contact window ([tiscd-inboundlogistics@list.ti.com](mailto:tiscd-inboundlogistics@list.ti.com)) before the shipment. Please make a phone call to them to confirm they get your documents. Meanwhile, please copy the email to buyer and related MRP members.
- **Note, make sure physical goods information should be match with what is on the documents otherwise it will violate local customs declaration process and cause punishment to your company.**
- The goods units on invoice and packing list should be the same and match with PO units. And the qty should be less or equal to TI PO total qty
- Basic information required for packing list and invoice are attached
- If the goods is used/repair back equipment or spare parts, please remark **“used item”** on invoice and packing list
- If the package is **wooden material**, ensure that this is remarked on the packing list, and fumigate the package before shipping

Packing List Basic Information			
Item	Required information	Material type	Remark
1	Ship-to address	All	Refer to PO document ship-to address
2	TI PO No.	All	If it's no GR needed item for special reason, please show “No GR Needed”
3	TI P/N	All	If no P/N in PO, remark N/A
4	<b>Vendor P/N</b>	All	
5	Material name	All	
6	Qty	All	
7	Batch No. (only for raw material)	Shelf Life Control Item	
8	Manufacture date (only for raw material)	Shelf Life Control Item	
9	Expiry date (only for raw material)	Shelf Life Control Item	
10	Net weight by PO item	All	Need accurate data, Custom may verify
11	Gross weight by Package	All	Need accurate data, Custom may verify
12	Country of origin	All	
13	Package Material certificates	All	Wooden package need fumigate and declare at CIQ :

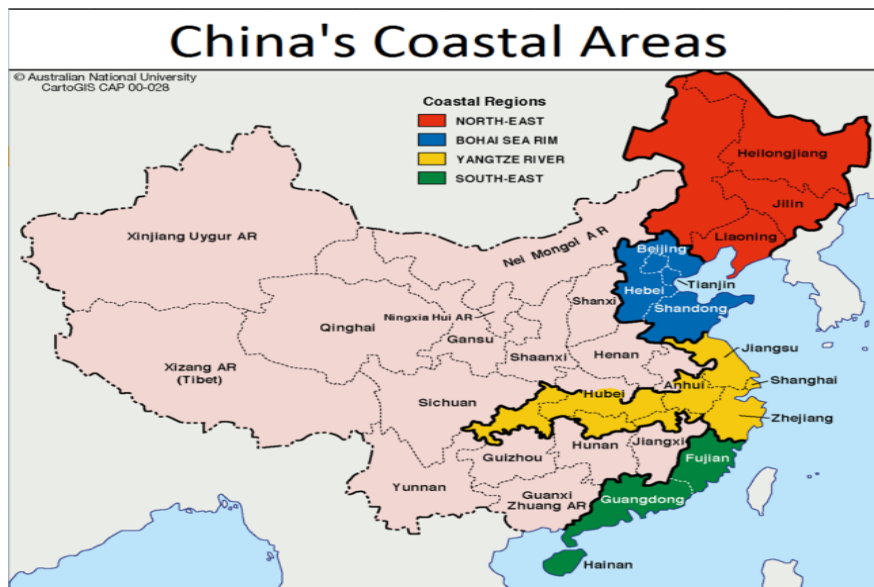


14	Pictures(For EQUIPMENT shipment only)	All	<ol style="list-style-type: none"> <li>1. Picture of name plate of machine(For EQUIPMENT shipment only)</li> <li>2. Picture of weight on scale(For EQUIPMENT shipment only)</li> <li>3. Picture of stamping fumigation logo for wooden package or declaration of non-wooden package</li> <li>4. Cargo contents picture</li> <li>5. Outer crate picture</li> </ol>
----	---------------------------------------	-----	-------------------------------------------------------------------------------------------------------------------------------------------------------------------------------------------------------------------------------------------------------------------------------------------------------------------------------------------------------------------

Invoice Basic Information

Item	Required information	Material type	Remark
1	TI PO No.	All	
2	TI P/N	All	If no P/N in PO, remark N/A
3	Material name	All	
4	Qty	All	
5	Unit Price and Total Price	All	For free sample, the actual price must be showed and remark free sample
6	<b>Net weight</b>	All	Need accurate data, Custom may verify
7	Country of origin	All	

8.5. China Coastal Region Map



## 8.6. Carrier Selection to TI China Capital (Excluding Chengdu = TI Shanghai and China Subcons)

Origin Country	Dest. Country	Commodity	Weight Break	Mode	Process
Any	China: Non-Chengdu	Capital	All	All	Needs Spot Quote: KWE, DBS, Expeditors, or DGF all possibilities. Routing Center to coordinate with TI Global Logistics Team

## 8.7. Carrier Selection to TI China Non-Capital (Excluding Chengdu = TI Shanghai and China Subcons)

Origin Country				Dest. Country	Commodity	Name	Contact Information	
Asia	China	Non-Capital	45kg - 1000 kg	Air	KWE	Michelle Ni & Tichina controltower	+86-21-62084088-6105 +86-21-62084088-6523	<a href="mailto:michelle.ni@kwe.com.cn">michelle.ni@kwe.com.cn</a> <a href="mailto:tichina.controltower@kwe.com.cn">tichina.controltower@kwe.com.cn</a>
China	China	Non-Capital	All	Ground	DB Schenker	Joy Tang & Coco Shi	+86-21-61708694 +86-21-61708726	<a href="mailto:joy.tang@dbschenker.com">joy.tang@dbschenker.com</a> <a href="mailto:Coco.Shi@dbschenker.com">Coco.Shi@dbschenker.com</a>
Europe	China	Non-Capital	<45kg	Air	DHL Express	Justin Yan	+86-21-65368888-3876	<a href="mailto:justin.yan@dhl.com">justin.yan@dhl.com</a>
Europe	China	Non-Capital	45kg - 3000 kg	Air	KWE	Michelle Ni & Tichina controltower	+86-21-62084088-6105 +86-21-62084088-6523	<a href="mailto:michelle.ni@kwe.com.cn">michelle.ni@kwe.com.cn</a> <a href="mailto:tichina.controltower@kwe.com.cn">tichina.controltower@kwe.com.cn</a>
Europe	China	Non-Capital	>3000 kg	Ocean	KWE	Michelle Ni & Tichina controltower	+86-21-62084088-6105 +86-21-62084088-6523	<a href="mailto:michelle.ni@kwe.com.cn">michelle.ni@kwe.com.cn</a> <a href="mailto:tichina.controltower@kwe.com.cn">tichina.controltower@kwe.com.cn</a>

# Texas Instruments

# Semiconductor Operations

Japan	China	Non-Capital	<45kg	Air	DHL Express	Justin Yan	+86-21-65368888-3876	<a href="mailto:justin.yan@dhl.com">justin.yan@dhl.com</a>
Japan	China	Non-Capital	45kg - 1000 kg	Air	KWE	Michelle Ni & Tichina controltower	+86-21-62084088-6105 +86-21-62084088-6523	<a href="mailto:michelle.ni@kwe.com.cn">michelle.ni@kwe.com.cn</a> <a href="mailto:tichina.controltower@kwe.com.cn">tichina.controltower@kwe.com.cn</a>
Japan	China	Non-Capital	>1000 kg	Ocean	KWE	Michelle Ni & Tichina controltower	+86-21-62084088-6105 +86-21-62084088-6523	<a href="mailto:michelle.ni@kwe.com.cn">michelle.ni@kwe.com.cn</a> <a href="mailto:tichina.controltower@kwe.com.cn">tichina.controltower@kwe.com.cn</a>
Latin America	China	Non-Capital	45kg - 1000 kg	Air	KWE	Michelle Ni & Tichina controltower	+86-21-62084088-6105 +86-21-62084088-6523	<a href="mailto:michelle.ni@kwe.com.cn">michelle.ni@kwe.com.cn</a> <a href="mailto:tichina.controltower@kwe.com.cn">tichina.controltower@kwe.com.cn</a>
Malaysia	China	Non-Capital	45kg - 1500 kg	Air	KWE	Michelle Ni & Tichina controltower	+86-21-62084088-6105 +86-21-62084088-6523	<a href="mailto:michelle.ni@kwe.com.cn">michelle.ni@kwe.com.cn</a> <a href="mailto:tichina.controltower@kwe.com.cn">tichina.controltower@kwe.com.cn</a>
Other-Asia	China	Non-Capital	<45kg	Air	DHL Express	Justin Yan	+86-21-65368888-3876	<a href="mailto:justin.yan@dhl.com">justin.yan@dhl.com</a>
Other-Latin America	China	Non-Capital	<45kg	Air	DHL Express	Justin Yan	+86-21-65368888-3876	<a href="mailto:justin.yan@dhl.com">justin.yan@dhl.com</a>
Other-South America	China	Non-Capital	<45kg	Air	DHL Express	Justin Yan	+86-21-65368888-3876	<a href="mailto:justin.yan@dhl.com">justin.yan@dhl.com</a>
S. Korea	China	Non-Capital	>1000 kg	Ocean	KWE	Michelle Ni & Tichina controltower	+86-21-62084088-6105 +86-21-62084088-6523	<a href="mailto:michelle.ni@kwe.com.cn">michelle.ni@kwe.com.cn</a> <a href="mailto:tichina.controltower@kwe.com.cn">tichina.controltower@kwe.com.cn</a>
Shanghai WGQ	China	Non-Capital	<1000 kg	Air	KWE	Michelle Ni & Tichina controltower	+86-21-62084088-6105 +86-21-62084088-6523	<a href="mailto:michelle.ni@kwe.com.cn">michelle.ni@kwe.com.cn</a> <a href="mailto:tichina.controltower@kwe.com.cn">tichina.controltower@kwe.com.cn</a>
South America	China	Non-Capital	45kg - 1000 kg	Air	KWE	Michelle Ni & Tichina controltower	+86-21-62084088-6105 +86-21-62084088-6523	<a href="mailto:michelle.ni@kwe.com.cn">michelle.ni@kwe.com.cn</a> <a href="mailto:tichina.controltower@kwe.com.cn">tichina.controltower@kwe.com.cn</a>

Code Ident **01295**

Document number

**6523119**

Rev **Z**

Sheet 35 of 79

# Texas Instruments

# Semiconductor Operations

United States	China	Non-Capital	<45kg	Air	DHL Express	Justin Yan	+86-21-65368888-3876	<a href="mailto:justin.yan@dhl.com">justin.yan@dhl.com</a>
United States - Eastern Time Zone	China	Non-Capital	45 - 1500 kg	Air	KWE	Michelle Ni & TIChina controltower	+86-21-62084088-6105 +86-21-62084088-6523	<a href="mailto:michelle.ni@kwe.com.cn">michelle.ni@kwe.com.cn</a> <a href="mailto:tichina.controltower@kwe.com.cn">tichina.controltower@kwe.com.cn</a>
United States - Eastern Time Zone	China	Non-Capital	>1500 kg	Ocean	KWE	Michelle Ni & TIChina controltower	+86-21-62084088-6105 +86-21-62084088-6523	<a href="mailto:michelle.ni@kwe.com.cn">michelle.ni@kwe.com.cn</a> <a href="mailto:tichina.controltower@kwe.com.cn">tichina.controltower@kwe.com.cn</a>
United States - Mountain to Central Time Zone	China	Non-Capital	45kg - 1500 kg	Air	KWE	Michelle Ni & TIChina controltower	+86-21-62084088-6105 +86-21-62084088-6523	<a href="mailto:michelle.ni@kwe.com.cn">michelle.ni@kwe.com.cn</a> <a href="mailto:tichina.controltower@kwe.com.cn">tichina.controltower@kwe.com.cn</a>
United States - Mountain to Central Time Zone	China	Non-Capital	>1500 kg	Ocean	KWE	Michelle Ni & TIChina controltower	+86-21-62084088-6105 +86-21-62084088-6523	<a href="mailto:michelle.ni@kwe.com.cn">michelle.ni@kwe.com.cn</a> <a href="mailto:tichina.controltower@kwe.com.cn">tichina.controltower@kwe.com.cn</a>
United States - Pacific Time Zone	China	Non-Capital	45 - 1000 kg	Air	KWE	Michelle Ni & TIChina controltower	+86-21-62084088-6105 +86-21-62084088-6523	<a href="mailto:michelle.ni@kwe.com.cn">michelle.ni@kwe.com.cn</a> <a href="mailto:tichina.controltower@kwe.com.cn">tichina.controltower@kwe.com.cn</a>
United States - Pacific Time Zone	China	Non-Capital	>1000 kg	Ocean	KWE	Michelle Ni & TIChina controltower	+86-21-62084088-6105 +86-21-62084088-6523	<a href="mailto:michelle.ni@kwe.com.cn">michelle.ni@kwe.com.cn</a> <a href="mailto:tichina.controltower@kwe.com.cn">tichina.controltower@kwe.com.cn</a>

# Texas Instruments

# Semiconductor Operations

## 8.8. Carrier Selection to TI China Chengdu Site Capital

Origin Country	Dest. Country	Commodity	Weight Break	Mode	Carrier	Name	Phone	e-mail
China	China, Chengdu	Capital Equip.	>880 kg	Inland Truck	DBS	Bella & Tina		<a href="mailto:Bella.Tang@dbschenker.com">Bella.Tang@dbschenker.com</a> <a href="mailto:Tina.Wang@dbschenker.com">Tina.Wang@dbschenker.com</a>
China	China, Chengdu	Capital Equip.	<880 kg	Air to CTU	DBS	Carol Cheng & Venice Lai	+852 3927 3892 Or +852 3927 3828	<a href="mailto:carol-ky.cheng@dbschenker.com">carol-ky.cheng@dbschenker.com</a> <a href="mailto:venice.lai@dbschenker.com">venice.lai@dbschenker.com</a>
Japan	China, Chengdu	Capital Equip.	>1000 kg	Ocean to Luzhou	KWE	Hidetake Homma	+ 81-80-6560-2461	<a href="mailto:Hidetake.homma@kwe.com">Hidetake.homma@kwe.com</a>
Japan	China, Chengdu	Capital Equip.	<1000 kg	Air to CTU	DBS	Koji Tomiyasu Yasuo Tsuchiya Hiroyuki Hashimoto	+81 92 481 2268 +81 479 78 8141 +81 6 6444 1194	Koji.tomiyasu@schenker-senio.co.jp yasuo.tsuchiya@schenker-senio.co.jp
Korea	China, Chengdu	Capital Equip.	>1500 kg	Ocean to Luzhou	KWE	Samuel Lim	+82-2-3145-0615 82-10-8557-8156	<a href="mailto:samuel.lim@kwe.com">samuel.lim@kwe.com</a>
Korea	China, Chengdu	Capital Equip.	<1500 kg	Air to CTU	DBS	Arjun Roh	+82 2 3140 0928 +82 010 3844 5925	Arjun.Roh@dbschenker.com Sel-China@dbschenker.com
Malaysia	China, Chengdu	Capital Equip.	>2100 kg	Ocean to Luzhou	KWE	Zahida Mali	+60 17 2987034	<a href="mailto:zahida.mali@kwe.com">zahida.mali@kwe.com</a>
Malaysia	China, Chengdu	Capital Equip.	<2100 kg	Air to CTU	DBS	Suresh Raja	+60 3 8775 7834	<a href="mailto:suresh.raja@dbschenker.com">suresh.raja@dbschenker.com</a>
Philippines	China, Chengdu	Capital Equip.	>3500 kg	Ocean to Luzhou	KWE	Cindy Montecillo	+63 917 8793649	<a href="mailto:cindy.montecillo@kwe.com">cindy.montecillo@kwe.com</a>
Philippines	China, Chengdu	Capital Equip.	<3500 kg	Air to CTU	DBS	Zhai Higuit	+63 2 928 9999 ext. 1115 Mobile +63 9175976180	<a href="mailto:zhai.higuit@dbschenker.com">zhai.higuit@dbschenker.com</a>
Singapore	China, Chengdu	Capital Equip.	>2000 kg	Ocean to Luzhou	KWE	Ning Shern Ong	+65 6548 4625	<a href="mailto:ning-shern.ong@kwe.com">ning-shern.ong@kwe.com</a>
Singapore	China, Chengdu	Capital Equip.	<2000 kg	Air to CTU	DBS	Sabariah Rashid Christine	+65 6549 5518 +65 6541 3375	Sabariah.rashid@dbschenker.com alan.wee@dbschenker.com christine.chung@dbschenker.com

# Texas Instruments

# Semiconductor Operations

						Chung Alan Wee		
United States	China, Chengdu	Capital Equip.	>1500 kg	Ocean to Luzhou	KWE	Jerry Adhahn	+1 817 233 2551	<a href="mailto:jerry.adhahn@kwe.com">jerry.adhahn@kwe.com</a>
United States	China, Chengdu	Capital Equip.	<1500 kg	Air to CTU	DBS	Kurian Kuriakose		<a href="mailto:ecc.use@dbschenker.com">ecc.use@dbschenker.com</a>

## 8.9 Carrier Selection to TI China Chengdu Site Non-Capital

### Carrier Contact: Destinations

Origin Country	Dest. Country	Commodity	Weight Break	Mode	Carrier	Name	Phone	e-mail
Asia	China	Non-Capital	45kg - 1000 kg	Air	KWE	Steven Hu	+86-28-85887289*1124	<a href="mailto:steven.hu@kwe.com.cn">steven.hu@kwe.com.cn</a>
China	China	Non-Capital	All	Ground	DB Schenker	Kevin Liu	+86-028-86587760	<a href="mailto:Kevin.Liu@dbschenker.com">Kevin.Liu@dbschenker.com</a>
Europe	China	Non-Capital	<45kg	Air	DHL Express	Pu Dong Yang	+86-028-87958683	<a href="mailto:dongyang.pu@dhl.com">dongyang.pu@dhl.com</a>
Europe	China	Non-Capital	45kg - 3000 kg	Air	KWE	Steven Hu	+86-28-85887289*1125	<a href="mailto:steven.hu@kwe.com.cn">steven.hu@kwe.com.cn</a>
Europe	China	Non-Capital	>3000 kg	Ocean	KWE	Steven Hu	+86-28-85887289*1131	<a href="mailto:steven.hu@kwe.com.cn">steven.hu@kwe.com.cn</a>
Japan	China	Non-Capital	<45kg	Air	DHL Express	Pu Dong Yang	+86-028-87958683	<a href="mailto:dongyang.pu@dhl.com">dongyang.pu@dhl.com</a>
Japan	China	Non-Capital	45kg - 1000 kg	Air	KWE	Steven Hu	+86-28-85887289*1123	<a href="mailto:steven.hu@kwe.com.cn">steven.hu@kwe.com.cn</a>
Japan	China	Non-Capital	>1000 kg	Ocean	KWE	Steven Hu	+86-28-85887289*1129	<a href="mailto:steven.hu@kwe.com.cn">steven.hu@kwe.com.cn</a>
South/Latin America	China	Non-Capital	45kg - 1000 kg	Air	KWE	Steven Hu	+86-28-85887289*1121	<a href="mailto:steven.hu@kwe.com.cn">steven.hu@kwe.com.cn</a>
Malaysia	China	Non-Capital	45kg - 1500 kg	Air	KWE	Steven Hu	+86-28-85887289*1122	<a href="mailto:steven.hu@kwe.com.cn">steven.hu@kwe.com.cn</a>
Other-Asia	China	Non-Capital	<45kg	Air	DHL Express	Pu Dong Yang	+86-028-87958683	<a href="mailto:dongyang.pu@dhl.com">dongyang.pu@dhl.com</a>

Code Ident	01295	Document number	6523119	Rev	Z	Sheet	38 of 79
------------	-------	-----------------	---------	-----	---	-------	----------

# Texas Instruments

# Semiconductor Operations

South/Latin America	China	Non-Capital	<45kg	Air	DHL Express	Pu Dong Yang	+86-028-87958683	<a href="mailto:dongyang.pu@dhl.com">dongyang.pu@dhl.com</a>
S. Korea	China	Non-Capital	>1000 kg	Ocean	KWE	Steven Hu	+86-28-85887289*1130	<a href="mailto:steven.hu@kwe.com.cn">steven.hu@kwe.com.cn</a>
Shanghai WGQ	China	Non-Capital	<1000 kg	Air	KWE	Steven Hu	+86-28-85887289*1132	<a href="mailto:steven.hu@kwe.com.cn">steven.hu@kwe.com.cn</a>
United States	China	Non-Capital	<45kg	Air	DHL Express	Mark Medley	+1-877-873-2522 Ext 4278	<a href="mailto:Mark.Medley@dhl.com">Mark.Medley@dhl.com</a>
United States - Eastern/Mountain	China	Non-Capital	45 - 1500 kg	Air	KWE	Steven Hu	+86-28-85887289*1117	<a href="mailto:steven.hu@kwe.com.cn">steven.hu@kwe.com.cn</a>
United States - Eastern/Mountain	China	Non-Capital	>1500 kg	Ocean	KWE	Steven Hu	+86-28-85887289*1126	<a href="mailto:steven.hu@kwe.com.cn">steven.hu@kwe.com.cn</a>
United States - Pacific	China	Non-Capital	45 - 1000 kg	Air	KWE	Steven Hu	+86-28-85887289*1118	<a href="mailto:steven.hu@kwe.com.cn">steven.hu@kwe.com.cn</a>
United States - Pacific	China	Non-Capital	>1000 kg	Ocean	KWE	Steven Hu	+86-28-85887289*1127	<a href="mailto:steven.hu@kwe.com.cn">steven.hu@kwe.com.cn</a>

Main TI'er(s) Contact info: Especially Capital Equipment

Name	Email	Phone	Remark
Tyler Huang	<a href="mailto:tyler-huang@ti.com">tyler-huang@ti.com</a>	+86-21-23073240	TI China Subcon
Jiawen Cheng	<a href="mailto:jiawen-cheng@ti.com">jiawen-cheng@ti.com</a>	+86-21-23073465	TI SEMI
CNLogistics group mail	<a href="mailto:cnlogistics@list.ti.com">cnlogistics@list.ti.com</a>	N/A	

## 9. Shipping to Texas Instruments Germany

### 9.1. Carrier Selection to Texas Instruments Germany

Origin Country	Dest. Country	Commodity	Weight Break	Mode	Carrier	Name	Phone	e-mail
Asia	Germany	General Goods	<50kg	Air	FedEx	Please contact <a href="mailto:texasinstruments@plg.cc">texasinstruments@plg.cc</a> for further instructions		
Asia	Germany	General Goods	50-1000kg	Air	KWE	Josef Schoenberger	+49 (0) 811 9988 0923 or +49 (0) 151 1714 6871	<a href="mailto:Josef.Schoenberger@ea.kwe.com">Josef.Schoenberger@ea.kwe.com</a> <a href="mailto:MUCIMP@KWE.COM">MUCIMP@KWE.COM</a>
Asia	Germany	General Goods	>1000kg	Ocean	KWE	Svenja Thiede	+49 (0) 405 939 1847 or +49 (0) 151 4626 4968	<a href="mailto:Svenja.Thiede@ea.kwe.com">Svenja.Thiede@ea.kwe.com</a> <a href="mailto:hamoceimp@ea.kwe.com">hamoceimp@ea.kwe.com</a>
Europe	Germany	General Goods	<50kg	Air	DHL Express	Please contact <a href="mailto:texasinstruments@plg.cc">texasinstruments@plg.cc</a> for further instructions		
Europe	Germany	General Goods	>50kg	Ground	DHL Freight		+49 89 32101 150	<a href="mailto:auftrag.muenchen@dhl.com">auftrag.muenchen@dhl.com</a>
United Kingdom	Germany	General Goods	<50kg	Air	DHL Express	Please contact <a href="mailto:texasinstruments@plg.cc">texasinstruments@plg.cc</a> for further instructions		
United Kingdom	Germany	General Goods	>50kg	Air	DHL Global Forwarding	Mark Pearce	+44 121 7805003	<a href="mailto:Bhx.afre1@dhl.com">Bhx.afre1@dhl.com</a> <a href="mailto:Mark.Pearce@dhl.com">Mark.Pearce@dhl.com</a>
United Kingdom	Germany	General Goods	>1000kg	Road	DBS	Josef Arens	+49 8165 605 24	<a href="mailto:josef.aren@dbuschenker.com">josef.aren@dbuschenker.com</a>
Germany	Germany	General Goods	<50kg	Ground	DHL Express	Please contact <a href="mailto:texasinstruments@plg.cc">texasinstruments@plg.cc</a> for further instructions		
Germany	Germany	General Goods	>50kg	Ground	DHL Freight		+49 89 32101 150	<a href="mailto:auftrag.muenchen@dhl.com">auftrag.muenchen@dhl.com</a>



## Texas Instruments

## Semiconductor Operations

Israel	Germany	General Goods	<50kg	Air	DHL Express	Please contact <a href="mailto:texasinstruments@plg.cc">texasinstruments@plg.cc</a> for further instructions		
Israel	Germany	General Goods	>50kg	Air	DHL Global Forwarding	Nick Graupner	+49 89 854 845 016	<a href="mailto:Dhl-de-muc-afrimport@dhl.com">Dhl-de-muc-afrimport@dhl.com</a> <a href="mailto:Nick.graupner@dhl.com">Nick.graupner@dhl.com</a>
United States	Germany	General Goods	<50kg	Air	FedEx	Please contact <a href="mailto:texasinstruments@plg.cc">texasinstruments@plg.cc</a> for further instructions		
United States	Germany	General Goods	50-1000kg	Air	DBS	Franz Kolbeck Markus Schneider	+49 89 975 90144 +49 89 975 90142	<a href="mailto:Franz.Kolbeck@dbschenker.com">Franz.Kolbeck@dbschenker.com</a> <a href="mailto:Markus.Ma.Schneider@dbschenker.com">Markus.Ma.Schneider@dbschenker.com</a>
United States	Germany	General Goods	>1000kg	Ocean	KWE	Svenja Thiede	+49 (0) 405 939 1847 or +49 (0) 151 4626 4968	<a href="mailto:Svenja.Thiede@ea.kwe.com">Svenja.Thiede@ea.kwe.com</a> <a href="mailto:hamoimp@ea.kwe.com">hamoimp@ea.kwe.com</a>

Main TI'er(s) Contact info: Especially Capital Equipment

Name	Email	Phone
Stefan Pichlmeier	<a href="mailto:s-pichlmeier@ti.com">s-pichlmeier@ti.com</a>	+498161804620
Tanja Riess	<a href="mailto:t-riess@ti.com">t-riess@ti.com</a>	+498161803544
Gabi Klose	<a href="mailto:gabi.klose@ti.com">gabi.klose@ti.com</a>	49 8161 80 4056

Code Ident **01295**

Document number **6523119**

Rev **Z**

Sheet 41 of 79

**10. Shipping to Texas Instruments India PVT LTD**

**10.1. Carrier Selection to TI India**

Origin Country	Dest. Country	Commodity	Weight Break	Mode	Carrier	Name	Phone	e-mail
Europe	India	General	< 40 Kgs	Air	DHLe	Ramesh Rajagopal A Lakshmi	+ 919739259577 91-044-30820532	ramesh.rajagopal@dhl.com a.lakshmi@dhl.com
Europe	India	General	>40 kgs	Air	KWE	Sangeetha S	+91 9845801403	<a href="mailto:sangeetha.s@kwe.com">sangeetha.s@kwe.com</a>
Other-Asia	India	General	< 40 Kgs	Air	DHLe	Ramesh Rajagopal A Lakshmi	+ 919739259577 91-044-30820532	ramesh.rajagopal@dhl.com a.lakshmi@dhl.com
Other-Asia	India	General	>40 kgs	Air	KWE	Sangeetha S	+91 9845801403	<a href="mailto:sangeetha.s@kwe.com">sangeetha.s@kwe.com</a>
Singapore	India	General	< 40 Kgs	Air	DHLe	Ramesh Rajagopal A Lakshmi	+ 919739259577/91- 044-30820532	ramesh.rajagopal@dhl.com a.lakshmi@dhl.com
Singapore	India	General	>40 kgs	Air	KWE	Sangeetha S	+91 9845801403	<a href="mailto:sangeetha.s@kwe.com">sangeetha.s@kwe.com</a>
United States	India	General	< 40 Kgs	Air	DHLe	Ramesh Rajagopal A Lakshmi	+ 919739259577 91-044-30820532	ramesh.rajagopal@dhl.com a.lakshmi@dhl.com
United States	India	General	>40 kgs	Air	KWE	Sangeetha S	+91 9845801403	<a href="mailto:sangeetha.s@kwe.com">sangeetha.s@kwe.com</a>

Main TI'er(s) Contact info for the Routing Center:  
Especially Capital Equipment

Name	Email	Phone
Suresh KV	<a href="mailto:sureshkv@ti.com">sureshkv@ti.com</a>	91-80-66831022
Sadiq R	<a href="mailto:sadiq.r@ti.com">sadiq.r@ti.com</a>	+91 99729 40225

**11. Shipping to Texas Instruments Japan LTD**

**11.1. Carrier Selection to TI Japan**

Origin Country	Dest. Country	Commodity	Weight Break	Mode	Carrier	Name	Phone	e-mail	Name	Phone	e-mail
Canada	Japan	General Commodity	< 51 kg	Air	DHLe	DHL Express Japan Key Account Support	Phone: +81 3-6731-8363	<a href="mailto:edgjp-express-cs-tijkas@dhl.com">edgjp-express-cs-tijkas@dhl.com</a>	Customer Service	Tel: 1-855-DHL-SHIP (1-855-345-7447)	<a href="http://international.dhl.ca/en/contact_center/contact_express.html">http://international.dhl.ca/en/contact_center/contact_express.html</a>
Canada	Japan	General Commodity	51 to 1,000 kg	Air	DB Schenker	Schenker-Seino Co., Ltd. Key Account Management ( KAM ) Sales	TBD	TBD	Yuki Kondo  Noritaka Morita	Tel: +81-(0)3-6626-0292 Mobile: +81-(0)80-3526-8033 Tel: +81-(0)3-6626-0161 Mobile:+81-(0)80-2060-5039	<a href="mailto:yuki.kondo@schenker-seino.co.jp">yuki.kondo@schenker-seino.co.jp</a>  <a href="mailto:noritaka.morita@schenker-seino.co.jp">noritaka.morita@schenker-seino.co.jp</a>
Canada	Japan	All Commodities - Except ICs/Wafers/Scanner&Stepper(Equipment)	> 1,000 kg	Ocean	DB Schenker	Schenker-Seino Co., Ltd. Key Account Management ( KAM ) Sales	TBD	TBD	Yuki Kondo  Noritaka Morita	Tel: +81-(0)3-6626-0292 Mobile: +81-(0)80-3526-8033 Tel: +81-(0)3-6626-0161 Mobile:+81-(0)80-2060-5039	<a href="mailto:yuki.kondo@schenker-seino.co.jp">yuki.kondo@schenker-seino.co.jp</a>  <a href="mailto:noritaka.morita@schenker-seino.co.jp">noritaka.morita@schenker-seino.co.jp</a>
United States of America	Japan	General Commodity	< 51 kg	Air	DHLe	DHL Express Japan Key Account Support	Phone: +81 3-6731-8363	<a href="mailto:edgjp-express-cs-tijkas@dhl.com">edgjp-express-cs-tijkas@dhl.com</a>	Customer Service	Please refer to DHL Global Contact Center and select origin country.	<a href="http://www.dhl.com/en/contact_center/contact_express.html#contact_us">DHL Global Contact Center http://www.dhl.com/en/contact_center/contact_express.html#contact_us</a>
United States of America	Japan	General Commodity	51 to 1,000 kg	Air	DB Schenker	Schenker-Seino Co., Ltd. Key Account Management ( KAM ) Sales	TBD	TBD	Yuki Kondo  Noritaka Morita	Tel: +81-(0)3-6626-0292 Mobile: +81-(0)80-3526-8033 Tel: +81-(0)3-6626-0161 Mobile:+81-(0)80-2060-5039	<a href="mailto:yuki.kondo@schenker-seino.co.jp">yuki.kondo@schenker-seino.co.jp</a>  <a href="mailto:noritaka.morita@schenker-seino.co.jp">noritaka.morita@schenker-seino.co.jp</a>

# Texas Instruments

# Semiconductor Operations

United States of America	Japan	All Commodities - Except ICs/Wafers/Scanner&Stepper(Equipment)	> 1,000 kg	Ocean	DB Schenker	Schenker-Seino Co., Ltd. Key Account Management ( KAM ) Sales	TBD	TBD	Yuki Kondo  Noritaka Morita	Tel: +81-(0)3-6626-0292 Mobile: +81-(0)80-3526-8033 Tel: +81-(0)3-6626-0161 Mobile:+81-(0)80-2060-5039	<a href="mailto:yuki.kondo@schenker-seino.co.jp">yuki.kondo@schenker-seino.co.jp</a>  <a href="mailto:noritaka.morita@schenker-seino.co.jp">noritaka.morita@schenker-seino.co.jp</a>
Central/South America	Japan	General Commodity	< 51 kg	Air	DHLe	DHL Express Japan Key Account Support	Phone: +81 3-6731-8363	<a href="mailto:edgjp-express-cs-tijkas@dhl.com">edgjp-express-cs-tijkas@dhl.com</a>	Customer Service	Tel: 1 800 888 388 (Toll free) Tel: +603 7964 2800 (overseas)	<a href="http://www.dhl.com.my/en/contact_center/contact_express.html#contact_us">http://www.dhl.com.my/en/contact_center/contact_express.html#contact_us</a>
Central/South America	Japan	General Commodity	51 to 1,000kg	Air	DB Schenker	Schenker-Seino Co., Ltd. Key Account Management ( KAM ) Sales	TBD	TBD	Yuki Kondo  Noritaka Morita	Tel: +81-(0)3-6626-0292 Mobile: +81-(0)80-3526-8033 Tel: +81-(0)3-6626-0161 Mobile:+81-(0)80-2060-5039	<a href="mailto:yuki.kondo@schenker-seino.co.jp">yuki.kondo@schenker-seino.co.jp</a>  <a href="mailto:noritaka.morita@schenker-seino.co.jp">noritaka.morita@schenker-seino.co.jp</a>
Central/South America	Japan	All Commodities - Except ICs/Wafers/Scanner&Stepper(Equipment)	> 1,000 kg	Ocean	DB Schenker	Schenker-Seino Co., Ltd. Key Account Management ( KAM ) Sales	TBD	TBD	Yuki Kondo  Noritaka Morita	Tel: +81-(0)3-6626-0292 Mobile: +81-(0)80-3526-8033 Tel: +81-(0)3-6626-0161 Mobile:+81-(0)80-2060-5039	<a href="mailto:yuki.kondo@schenker-seino.co.jp">yuki.kondo@schenker-seino.co.jp</a>  <a href="mailto:noritaka.morita@schenker-seino.co.jp">noritaka.morita@schenker-seino.co.jp</a>
Korea	Japan	General Commodity	< 51 kg	Air	DHLe	DHL Express Japan Key Account Support	Phone: +81 3-6731-8363	<a href="mailto:edgjp-express-cs-tijkas@dhl.com">edgjp-express-cs-tijkas@dhl.com</a>	Customer Service	Tel: 1588-0001 (within Korea) Tel: +82-1588-0001 (overseas)	<a href="http://www.dhl.co.kr/en/contact_center/contact_express.html#contact_us">http://www.dhl.co.kr/en/contact_center/contact_express.html#contact_us</a>
Korea	Japan	General Commodity	51 to 500 kg	Air	KWE	KWE JP Import team	Phone: +81-3-6865-1540 +81-47-709-3617	<a href="mailto:ti.2010@kwe.com">ti.2010@kwe.com</a> <a href="mailto:c127@kwe.com">c127@kwe.com</a>	Samuel Lim	Tel: 82-2-3145-0615	<a href="mailto:samuel.lim@kwe.com">samuel.lim@kwe.com</a>

Code Ident **01295**

Document number

**6523119**

Rev **Z**

Sheet 44 of 79

# Texas Instruments

# Semiconductor Operations

Korea	Japan	All Commodities - Except ICs/Wafers/Scanner&Stepper(Equipment)	> 1,000 kg	Ocean					Mitsuhiro Kinoshita (TI Japan Logistics)	Tel: +81 (0) 29-880-4303 Mobile: +81 (0)80-3246-9106	<a href="mailto:m-kinoshita@ti.com">m-kinoshita@ti.com</a>
Taiwan	Japan	General Commodity	< 51 kg	Air	DHLe	DHL Express Japan Key Account Support	Phone: +81 3-6731-8363	<a href="mailto:edgjp-express-cs-tijkas@dhl.com">edgjp-express-cs-tijkas@dhl.com</a>	Customer Service	Tel: 0800-769-888 (Toll free) Tel: +886-2-2503-8378 (overseas)	<a href="http://www.dhl.com.tw/en/contact_center/contact_express.html#contact_us">http://www.dhl.com.tw/en/contact_center/contact_express.html#contact_us</a>
Taiwan	Japan	General Commodity	51 to 1,000 kg	Air	KWE	KWE JP Import team	Phone: +81-3-6865-1540 +81-47-709-3617	ti.2010@kwe.com c127@kwe.com	Linda Chang	Tel: 886-2-2506-3151 (ext: 216)	<a href="mailto:linda.chang@kwe.com">linda.chang@kwe.com</a>
Taiwan	Japan	All Commodities - Except ICs/Wafers/Scanner&Stepper(Equipment)	>501 kg	Ocean	KWE	KWE JP Import team	Phone: +81-3-6865-1540 +81-47-709-3617	ti.2010@kwe.com c127@kwe.com	Linda Chang	Tel: 886-2-2506-3151 (ext: 216)	<a href="mailto:linda.chang@kwe.com">linda.chang@kwe.com</a>
China	Japan	General Commodity	< 51 kg	Air	DHLe	DHL Express Japan Key Account Support	Phone: +81 3-6731-8363	<a href="mailto:edgjp-express-cs-tijkas@dhl.com">edgjp-express-cs-tijkas@dhl.com</a>	Customer Service	Tel: 800-810-8000 (Toll-Free within China only) North China Tel: 86-10-67806680 East China Tel: 86-21-55514777 South China Tel: 86-20-86669288	<a href="http://www.cn.dhl.com/en/contact_center/contact_express.html#contact_us">http://www.cn.dhl.com/en/contact_center/contact_express.html#contact_us</a>
China	Japan	General Commodity	51 to 500 kg	Air	KWE	KWE JP Import team	Phone: +81-3-6865-1540 +81-47-709-3617	ti.2010@kwe.com c127@kwe.com	Michelle Ni	Tel: 86-21-6208-4088 (ext :6250)	<a href="mailto:michelle.ni@kwe.com">michelle.ni@kwe.com</a>

# Texas Instruments

# Semiconductor Operations

China	Japan	All Commodities - Except ICs/Wafers/Scanner&Stepper(Equipment)	> 501 kg	Ocean	KWE	KWE JP Import team	Phone: +81-3-6865-1540 +81-47-709-3617	ti.2010@kwe.com c127@kwe.com	Michelle Ni	Tel: 86-21-6208-4088 (ext :6250)	<a href="mailto:michelle.ni@kwe.com">michelle.ni@kwe.com</a>
HongKong	Japan	General Commodity	< 51 kg	Air	DHLe	DHL Express Japan Key Account Support	Phone: +81 3-6731-8363	<a href="mailto:edgjp-express-cs-tijkas@dhl.com">edgjp-express-cs-tijkas@dhl.com</a>	Customer Service - International Express shipping	Tel: +852 2400 3388	<a href="http://www.dhl.com.hk/en/contact_center/contact_express.html#local_contact">hkgwebcust@dhl.com</a> <a href="http://www.dhl.com.hk/en/contact_center/contact_express.html#local_contact">http://www.dhl.com.hk/en/contact_center/contact_express.html#local_contact</a>
HongKong	Japan	General Commodity	51 to 500 kg	Air	KWE	KWE JP Import team	Phone: +81-3-6865-1540 +81-47-709-3617	ti.2010@kwe.com c127@kwe.com	Bowie Kwong	Tel: 852-27057528	<a href="mailto:bowie.kwong@kwe.com">bowie.kwong@kwe.com</a>
HongKong	Japan	All Commodities - Except ICs/Wafers/Scanner&Stepper(Equipment)	>501 kg	Ocean	KWE	KWE JP Import team	Phone: +81-3-6865-1540 +81-47-709-3617	ti.2010@kwe.com c127@kwe.com	Bowie Kwong	Tel: 852-27057528	<a href="mailto:bowie.kwong@kwe.com">bowie.kwong@kwe.com</a>
Philippines	Japan	General Commodity	< 51 kg	Air	DHLe	DHL Express Japan Key Account Support	Phone: +81 3-6731-8363	<a href="mailto:edgjp-express-cs-tijkas@dhl.com">edgjp-express-cs-tijkas@dhl.com</a>	Customer Service	Phone: (Manila) +63 2 811 7000 (Cebu) +63 32 341 7400, (Toll Free) 1800 1888 0345 Fax: +632 811 7111	<a href="mailto:mnl.customer@kwe.com">mnl.customer@kwe.com</a> <a href="http://www.dhl.com.ph/en/contact_center/contact_express.html#local_contact">http://www.dhl.com.ph/en/contact_center/contact_express.html#local_contact</a>
Philippines	Japan	General Commodity	51 to 500 kg	Air	KWE	KWE JP Import team	Phone: +81-3-6865-1540 +81-47-709-3617	ti.2010@kwe.com c127@kwe.com	Marilyn Alberto	Tel: 63-2-855-3451 / Fax: 63-2-825-6213	<a href="mailto:marilyn.alberto@kwe.com">marilyn.alberto@kwe.com</a>

Code Ident **01295**

Document number

**6523119**

Rev **Z**

Sheet 46 of 79

# Texas Instruments

# Semiconductor Operations

Philippines	Japan	All Commodities - Except ICs/Wafers/Scanner&Stepper(Equipment)	> 501 kg	Ocean	KWE	KWE JP Import team	Phone: +81-3-6865-1540 +81-47-709-3617	ti.2010@kwe.com c127@kwe.com	Marilyn Alberto	Tel: 63-2-855-3451 / Fax: 63-2-825-6213	<a href="mailto:marilyn.alberto@kwe.com">marilyn.alberto@kwe.com</a>
Malaysia	Japan	General Commodity	< 51 kg	Air	DHLe	DHL Express Japan Key Account Support	Phone: +81 3-6731-8363	<a href="mailto:edgjp-express-cs-tijkas@dhl.com">edgjp-express-cs-tijkas@dhl.com</a>	Customer Service	Phone: 1 800 888 388 (Toll free) +603 7964 2800 (overseas)	<a href="http://www.dhl.com.my/en/contact_center/contact_express.html#local_contact">http://www.dhl.com.my/en/contact_center/contact_express.html#local_contact</a>
Malaysia	Japan	General Commodity	51 to 500 kg	Air	KWE	KWE JP Import team	Phone: +81-3-6865-1540 +81-47-709-3617	ti.2010@kwe.com c127@kwe.com	Zahida Mali	Tel: 60-3-8775-3405	<a href="mailto:zahida.mali@kwe.com">zahida.mali@kwe.com</a>
Malaysia	Japan	All Commodities - Except ICs/Wafers/Scanner&Stepper(Equipment)	> 501 kg	Ocean	KWE	KWE JP Import team	Phone: +81-3-6865-1540 +81-47-709-3617	ti.2010@kwe.com c127@kwe.com	Zahida Mali	Tel: 60-3-8775-3405	<a href="mailto:zahida.mali@kwe.com">zahida.mali@kwe.com</a>
Singapore	Japan	General Commodity	< 51 kg	Air	DHLe	DHL Express Japan Key Account Support	Phone: +81 3-6731-8363	<a href="mailto:edgjp-express-cs-tijkas@dhl.com">edgjp-express-cs-tijkas@dhl.com</a>	Customer Service	Tel: 1800-285 8888 (Toll-free within Singapore only) Tel: +65 6285 8888 (overseas)	<a href="http://www.dhl.com.sg/en/contact_center/contact_express.html#contact_us">web.customer@dhl.com</a> <a href="http://www.dhl.com.sg/en/contact_center/contact_express.html#contact_us">http://www.dhl.com.sg/en/contact_center/contact_express.html#contact_us</a>
Singapore	Japan	General Commodity	51 to 500 kg	Air	KWE	KWE JP Import team	Phone: +81-3-6865-1540 +81-47-709-3617	ti.2010@kwe.com c127@kwe.com	Ning Ong Shern	Tel: 65-6548-4625	<a href="mailto:ning-shern.ong@kwe.com">ning-shern.ong@kwe.com</a>

Code Ident **01295**

Document number

**6523119**

Rev **Z**

Sheet 47 of 79

# Texas Instruments

# Semiconductor Operations

Singapore	Japan	All Commodities - Except ICs/Wafers/Scanner&Stepper(Equipment)	> 501 kg	Ocean	KWE	KWE JP Import team	Phone: +81-3-6865-1540 +81-47-709-3617	ti.2010@kwe.com c127@kwe.com	Ning Ong Shern	Tel: 65-6548-4625	<a href="mailto:ning-shern.ong@kwe.com">ning-shern.ong@kwe.com</a>
Thailand	Japan	General Commodity	< 51 kg	Air	DHLe	DHL Express Japan Key Account Support	Phone: +81 3-6731-8363	<a href="mailto:edgjp-express-cs-tijkas@dhl.com">edgjp-express-cs-tijkas@dhl.com</a>	Customer Service	Tel: 02-345-5000	<a href="http://www.dhl.co.th/en/contact_center/contact_express.html#contact_us">http://www.dhl.co.th/en/contact_center/contact_express.html#contact_us</a>
Thailand	Japan	General Commodity	51 to 500 kg	Air	KWE	KWE JP Import team	Phone: +81-3-6865-1540 +81-47-709-3617	ti.2010@kwe.com c127@kwe.com	Paul Stracey	Tel: 66-2-367-3161 / Fax: 66-2-249-3982	<a href="mailto:paul.stracey@kwe.com">paul.stracey@kwe.com</a>
Thailand	Japan	All Commodities - Except ICs/Wafers/Scanner&Stepper(Equipment)	> 501 kg	Ocean	KWE	KWE JP Import team	Phone: +81-3-6865-1540 +81-47-709-3617	ti.2010@kwe.com c127@kwe.com	Paul Stracey	Tel: 66-2-367-3161 / Fax: 66-2-249-3982	<a href="mailto:paul.stracey@kwe.com">paul.stracey@kwe.com</a>
Other-Asia	Japan	General Commodity	< 51 kg	Air	DHLe	DHL Express Japan Key Account Support	Phone: +81 3-6731-8363	<a href="mailto:edgjp-express-cs-tijkas@dhl.com">edgjp-express-cs-tijkas@dhl.com</a>	Customer Service	Tel: +852 2400 3388	<a href="http://www.dhl.com.hk/en/contact_center/contact_express.html#contact_us">http://www.dhl.com.hk/en/contact_center/contact_express.html#contact_us</a>
Other-Asia	Japan	General Commodity	51 to 500 kg	Air	KWE	KWE JP Import team	Phone: +81-3-6865-1540 +81-47-709-3617	ti.2010@kwe.com c127@kwe.com	Helen Leung	Tel: 852-34180906	<a href="mailto:helen.leung@kwe.com">helen.leung@kwe.com</a>
Other-Asia	Japan	All Commodities - Except ICs/Wafers/Scanner&Stepper(Equipment)	> 501 kg	Ocean	KWE	KWE JP Import team	Phone: +81-3-6865-1540 +81-47-709-3617	ti.2010@kwe.com c127@kwe.com	Helen Leung	Tel: 852-34180906	<a href="mailto:helen.leung@kwe.com">helen.leung@kwe.com</a>

Code Ident **01295**

Document number

**6523119**

Rev **Z**

Sheet 48 of 79



# Texas Instruments

# Semiconductor Operations

Germany	Japan	General Commodity	< 51 kg	Air	DHLe	DHL Express Japan Key Account Support	Phone: +81 3-6731-8363	<a href="mailto:edgjp-express-cs-tijkas@dhl.com">edgjp-express-cs-tijkas@dhl.com</a>	Customer Service	Phone: + 49 (0)180 6 345 300-3*	<a href="https://www.dhl.de/en/toolbar/service/kontaktcenter.html">https://www.dhl.de/en/toolbar/service/kontaktcenter.html</a>
Germany	Japan	General Commodity	51 to 1,000 kg	Air	DB Schenker	Schenker-Seino Co., Ltd. Key Account Management ( KAM ) Sales	TBD	TBD	Yuki Kondo  Noritaka Morita	Tel: +81-(0)3-6626-0292 Mobile: +81-(0)80-3526-8033 Tel: +81-(0)3-6626-0161 Mobile:+81-(0)80-2060-5039	<a href="mailto:yuki.kondo@schenker-seino.co.jp">yuki.kondo@schenker-seino.co.jp</a>  <a href="mailto:noritaka.morita@schenker-seino.co.jp">noritaka.morita@schenker-seino.co.jp</a>
Germany	Japan	All Commodities - Except ICs/Wafers/Scanner&Stepper(Equipment)	> 1,000 kg	Ocean	DB Schenker	Schenker-Seino Co., Ltd. Key Account Management ( KAM ) Sales	TBD	TBD	Yuki Kondo  Noritaka Morita	Tel: +81-(0)3-6626-0292 Mobile: +81-(0)80-3526-8033 Tel: +81-(0)3-6626-0161 Mobile:+81-(0)80-2060-5039	<a href="mailto:yuki.kondo@schenker-seino.co.jp">yuki.kondo@schenker-seino.co.jp</a>  <a href="mailto:noritaka.morita@schenker-seino.co.jp">noritaka.morita@schenker-seino.co.jp</a>
Europe	Japan	General Commodity	< 51 kg	Air	DHLe	DHL Express Japan Key Account Support	Phone: +81 3-6731-8363	<a href="mailto:edgjp-express-cs-tijkas@dhl.com">edgjp-express-cs-tijkas@dhl.com</a>	Customer Service	Please refer to DHL Global Contact Center and select origin country.	<a href="http://www.dhl.com/en/contact_center/contact_express.html#contact_us">DHL Global Contact Center http://www.dhl.com/en/contact_center/contact_express.html#contact_us</a>
Europe	Japan	General Commodity	51 to 1,000 kg	Air	DB Schenker	Schenker-Seino Co., Ltd. Key Account Management ( KAM ) Sales	TBD	TBD	Yuki Kondo  Noritaka Morita	Tel: +81-(0)3-6626-0292 Mobile: +81-(0)80-3526-8033 Tel: +81-(0)3-6626-0161 Mobile:+81-(0)80-2060-5039	<a href="mailto:yuki.kondo@schenker-seino.co.jp">yuki.kondo@schenker-seino.co.jp</a>  <a href="mailto:noritaka.morita@schenker-seino.co.jp">noritaka.morita@schenker-seino.co.jp</a>
Europe	Japan	All Commodities - Except ICs/Wafers/Scanner&Stepper(Equipment)	> 1,000 kg	Ocean	DB Schenker	Schenker-Seino Co., Ltd. Key Account Management ( KAM ) Sales	TBD	TBD	Yuki Kondo  Noritaka Morita	Tel: +81-(0)3-6626-0292 Mobile: +81-(0)80-3526-8033 Tel: +81-(0)3-6626-0161 Mobile:+81-(0)80-2060-5039	<a href="mailto:yuki.kondo@schenker-seino.co.jp">yuki.kondo@schenker-seino.co.jp</a>  <a href="mailto:noritaka.morita@schenker-seino.co.jp">noritaka.morita@schenker-seino.co.jp</a>

# Texas Instruments Semiconductor Operations

Main TI'er(s) Contact info for the Routing Center: Especially Capital Equipment

Name	Email	Phone
Mitsuhiro Kinoshita	<a href="mailto:m-kinoshita@ti.com">m-kinoshita@ti.com</a>	+81-(0)29-880-4303 Mobile: +81-(0)80-3246-9106

## 12. Shipping to Texas Instruments Malaysia Sites

### 12.1. Carrier Selection to TIEM (Melaka)

Carrier Contact: Destinations

Origin Country	Dest. Country	Commodity	Weight Break	Mode	Carrier	Name	Phone	e-mail
China	Malaysia	General Goods	<45kg	Air	DHLe	Komathi Balakrisnan	603 2241 8819	Komathi.Balakrisnan@dhl.com
China	Malaysia	General Goods	45<500kg	Air	KWE	Thomas	603-8775 3396	thomas.hii@kwe.com
China	Malaysia	Leadframes	>500kg	Ocean	KWE	Christyn Yap	603 5614 9900	Christyn_Yap@KWEogistics.com
Germany	Malaysia	General Goods	<45kg	Air	FedEx	Simon Ho/ Syafik Haneff	603-5628 3004	chee-seng.ho@fedex.com myonecall@fedex.com
Germany	Malaysia	General Goods	45kg - 500kg	Air	KWE	Thomas	603-8775 3396	thomas.hii@kwe.com
HongKong	Malaysia	General Goods	<45kg	Air	DHLe	Komathi Balakrisnan	603 2241 8819	Komathi.Balakrisnan@dhl.com
HongKong	Malaysia	General Goods	45-500kg	Air	KWE	Thomas	603-8775 3396	thomas.hii@kwe.com
HongKong	Malaysia	General Goods	>500kg	Ocean	KWE	Christyn Yap	603 5614 9900	Christyn_Yap@KWEogistics.com
Japan	Malaysia	General Goods	<45kg	Air	DHLe	Komathi Balakrisnan	603 2241 8819	Komathi.Balakrisnan@dhl.com
Japan	Malaysia	General Goods	45-500kg	Air	KWE	Thomas	603-8775 3396	thomas.hii@kwe.com
Japan	Malaysia	General Goods	>500kg	Ocean	KWE	Christyn Yap	603 5614 9900	Christyn_Yap@KWEogistics.com
Korea	Malaysia	General Goods	<45kg	Air	DHLe	Komathi Balakrisnan	603 2241 8819	Komathi.Balakrisnan@dhl.com
Korea	Malaysia	General Goods	45kg - 500kg	Air	KWE	Thomas	603-8775 3396	thomas.hii@kwe.com
Korea	Malaysia	Leadframes	>500kg	Ocean	KWE	Christyn Yap	603 5614 9900	Christyn_Yap@KWEogistics.com
Malaysia	Malaysia	General Goods	45kg - 500kg	Truck	SCF	Haizal	019-2736159	haizal@scforce.com sftiem@scforce.com
Malaysia (non-bonded & non-FTZ)	Malaysia	General Goods	<45kg	Truck	DHLe	Komathi Balakrisnan	603 2241 8819	Komathi.Balakrisnan@dhl.com

Code Ident	01295	Document number	6523119	Rev	Z	Sheet	50 of 79
------------	-------	-----------------	---------	-----	---	-------	----------

# Texas Instruments

# Semiconductor Operations

Malaysia (Penang)	Malaysia	General Goods	NA	Air	SCF	Sany/Roger	173919	sany@scforce.com opspen@scforce.com
Philippines	Malaysia	General Goods	<45kg	Air	DHLe	Komathi Balakrisnan	603 2241 8819	Komathi.Balakrisnan@dhl.com
Philippines	Malaysia	General Goods	45kg - 500kg	Air	KWE	Thomas	603-8775 3396	thomas.hii@kwe.com
Philippines	Malaysia	Leadframes	>500kg	Ocean	SCF	Robert	65 6290 8880	robert.sg@scforce.com ops@sfl-global.com
Singapore	Malaysia	General Goods	<15kg	Air	DHLe	Komathi Balakrisnan	603 2241 8819	Komathi.Balakrisnan@dhl.com
Singapore	Malaysia	General Goods	>15kg	Truck	SCF	Robert	65 6290 8880	robert.sg@scforce.com ops@sfl-global.com
Taiwan	Malaysia	General Goods	<45kg	Air	DHLe	Komathi Balakrisnan	603 2241 8819	Komathi.Balakrisnan@dhl.com
Taiwan	Malaysia	General Goods	45kg - 500kg	Air	KWE	Thomas	603-8775 3396	thomas.hii@kwe.com
Taiwan	Malaysia	General Goods	>500kg	Ocean	KWE	Christyn Yap	603 5614 9900	Christyn_Yap@KWEogistics.com
Thailand	Malaysia	General Goods	<45kg	Air	DHLe	Komathi Balakrisnan	603 2241 8819	Komathi.Balakrisnan@dhl.com
Thailand	Malaysia	General Goods	45kg - 500kg	Air	KWE	Thomas	603-8775 3396	thomas.hii@kwe.com
United Kingdom	Malaysia	General Goods	45kg - 500kg	Air	DGF	Louis Cho	603 8020 2140	Louis.ChunTuck@dhl.com
United Kingdom	Malaysia	General Goods	>500kg	Ocean	KWE			
United Kingdom	Malaysia	General Goods	<45kg	Air	DHLe	Komathi Balakrisnan	603 2241 8819	Komathi.Balakrisnan@dhl.com
United States (Dallas)	Malaysia	General Goods	>100kg	Air	DBS	Bong Chin Fei/Nor Azah	603 - 8775 7869	chin-fei.bong@dbschenker.com nor.azah@dbschenker.com
United States	Malaysia	General Goods	<100kg	Air	DHLe	Komathi Balakrisnan	603 2241 8819	Komathi.Balakrisnan@dhl.com
United States (Others)	Malaysia	General Goods	>100kg	Air	DGF	Louis Cho	603 8020 2140	Louis.ChunTuck@dhl.com
United States (Others)	Malaysia	General Goods	>100kg	Ocean	KWE	Christyn Yap	603 5614 9900	Christyn_Yap@KWEogistics.com

Code Ident 01295

Document number 6523119

Rev Z

Sheet 51 of 79

# Texas Instruments Semiconductor Operations

## 12.2. Carrier Selection to TIM (Kuala Lumpur Site)

Origin Country	Dest. Country	Commodity	Weight Break	Mode	Carrier	Name	Phone	e-mail
China	Malaysia	General Goods	<45kg	Air	DHLe	Yusrizal	603 22418413	MY_CS_Texasinstruments@dhl.com
China	Malaysia	General Goods	45kg - 500kg	Air	KWE	Thomas	603-8775 3396	thomas.hii@kwe.com
China	Malaysia	General Goods	>500kg	Ocean	KWE	Zahida	603-8775 3405	zahida.mali@kwe.com
Germany	Malaysia	General Goods	<45kg	Air	DHLe	Yusrizal	603 22418413	MY_CS_Texasinstruments@dhl.com
Germany	Malaysia	General Goods	45kg - 500kg	Air	KWE	Thomas	603-8775 3396	thomas.hii@kwe.com
HongKong	Malaysia	General Goods	<45kg	Air	DHLe	Yusrizal	603 22418413	MY_CS_Texasinstruments@dhl.com
HongKong	Malaysia	General Goods	45kg - 500kg	Air	KWE	Thomas	603-8775 3396	thomas.hii@kwe.com
HongKong	Malaysia	General Goods	>500kg	Ocean	KWE	Zahida	603-8775 3405	zahida.mali@kwe.com
Japan	Malaysia	General Goods	<45kg	Air	DHLe	Yusrizal	603 22418413	MY_CS_Texasinstruments@dhl.com
Japan	Malaysia	General Goods	45kg - 500kg	Air	KWE	Thomas	603-8775 3396	thomas.hii@kwe.com
Japan	Malaysia	General Goods	>500kg	Ocean	KWE	Zahida	603-8775 3405	zahida.mali@kwe.com
Korea	Malaysia	General Goods	<45kg	Air	DHLe	Yusrizal	603 22418413	MY_CS_Texasinstruments@dhl.com
Korea	Malaysia	General Goods	45kg - 500kg	Air	KWE	Thomas	603-8775 3396	thomas.hii@kwe.com
Korea	Malaysia	General Goods	>500kg	Ocean	KWE	Zahida	603-8775 3405	zahida.mali@kwe.com
Malaysia (non-bonded)	Malaysia	General Goods	<45kg	Truck	DHLe	Yusrizal	603 22418413	MY_CS_Texasinstruments@dhl.com
Malaysia (non-bonded)	Malaysia	General Goods	>45kg	Truck	KWE	Thomas	603-8775 3396	thomas.hii@kwe.com
Malaysia (bonded)	Malaysia	General Goods	All weight	Truck	KWE	Thomas	603-8775 3396	thomas.hii@kwe.com
Malaysia (Penang)	Malaysia	General Goods	<45kg	Truck	DHLe	Yusrizal	603 22418413	MY_CS_Texasinstruments@dhl.com
Malaysia (Penang)	Malaysia	General Goods	45kg - 300kg	Air	KWE	Zahida Erleen	603-8775 3405 604-6161020	zahida.mali@kwe.com erleen.lim@kwe.com
Malaysia (Penang)	Malaysia	General Goods	>300kg	Truck	KWE	Zulkifli	604-6161 006	<a href="mailto:zulkifli.ahmad@kwe.com">zulkifli.ahmad@kwe.com</a>
Philippines	Malaysia	General Goods	<45kg	Air	DHLe	Yusrizal	603 22418413	MY_CS_Texasinstruments@dhl.com
Philippines	Malaysia	General Goods	45kg - 500kg	Air	KWE	Thomas	603-8775 3396	thomas.hii@kwe.com
Philippines	Malaysia	General Goods	>500kg	Ocean	SCF	Robert	65 6290 8880	<a href="mailto:robert@sfl-global.com">robert@sfl-global.com</a> <a href="mailto:robert.sg@scforce.com">robert.sg@scforce.com</a>
Singapore	Malaysia	General Goods	<45kg	Air	DHLe	Yusrizal	603 22418413	MY_CS_Texasinstruments@dhl.com

Code Ident **01295**

Document number **6523119**

Rev **Z**

Sheet 52 of 79

# Texas Instruments

# Semiconductor Operations

Singapore	Malaysia	General Goods	>45kg - 500kg	Truck	SCF	Robert	65 6290 8880	<a href="mailto:robert@sfl-global.com">robert@sfl-global.com</a> <a href="mailto:robert.sg@scforce.com">robert.sg@scforce.com</a>
Singapore	Malaysia	General Goods	>500kg	Truck	KWE	Thomas	603-8775 3396	thomas.hii@kwe.com
Taiwan	Malaysia	General Goods	<45kg	Air	DHLe	Yusrizal	603 22418413	MY_CS_Texasinstruments@dhl.com
Taiwan	Malaysia	General Goods	45kg - 500kg	Air	KWE	Thomas	603-8775 3396	thomas.hii@kwe.com
Taiwan	Malaysia	General Goods	>500kg	Ocean	KWE	Zahida	603-8775 3405	zahida.mali@kwe.com
Thailand	Malaysia	General Goods	<45kg	Air	DHLe	Yusrizal	603 22418413	MY_CS_Texasinstruments@dhl.com
Thailand	Malaysia	General Goods	45kg - 500kg	Air	KWE	Thomas	603-8775 3396	thomas.hii@kwe.com
United Kingdom	Malaysia	General Goods	<45kg	Air	DHLe	Yusrizal	603 22418413	MY_CS_Texasinstruments@dhl.com
United Kingdom	Malaysia	General Goods	45kg - 500kg	Air	DGF	Louis Cho	603 8020 2140	Louis.ChunTuck@dhl.com
United States (Dallas)	Malaysia	General Goods	<45kg	Air	DHLe	Yusrizal	603 22418413	MY_CS_Texasinstruments@dhl.com
United States (Dallas)	Malaysia	General Goods	45kg - 500kg	Air	DBS	Bong Chin Fei/Nor Azah	603 - 8775 7869	chin-fei.bong@dbschenker.com nor.azah@dbschenker.com
United States (Others)	Malaysia	General Goods	<45kg	Air	DHLe	Yusrizal	603 22418413	MY_CS_Texasinstruments@dhl.com
United States (Others)	Malaysia	General Goods	45kg - 500kg	Air	DGF	Louis Cho	603 8020 2140	Louis.ChunTuck@dhl.com
Japan	Malaysia	DAF Tape	NA	Air	SCF	Sany	6019-266 7775	sany@scforce.com/ Kulimport@scforce.com

Main TI'er(s) Contact info: Especially Capital Equipment

Name	Email	Phone
Nisha	kalainisha@ti.com	03-42623134
Tang, Choon Haw	ch-tang@ti.com	03-4264 3147
Ling, Sing Liang	s-ling1@ti.com	603 4264 3624

Code Ident **01295**

Document number

**6523119**

Rev **Z**

Sheet 53 of 79

# Texas Instruments

# Semiconductor Operations

## 13. Shipping to Texas Instruments Mexico

### 13.1. Carrier Selection to TI Mexico

Origin Country	Dest. Country	Commodity	Weight Break	Mode	Carrier	Name	Phone	e-mail	Remarks
Any Origin	Mexico	General Commodity	<=500 kg	Air	DHL Express	Miguel Mendoza	+52 1 (55) 32327909	<a href="mailto:miguel.m.guzman@dhl.com">miguel.m.guzman@dhl.com</a>	Guadalajara Airport (GDL)
Any Origin	Mexico	General Commodity	>500 kg	Air	Mach 1	Ximena Arch	+52 (333) 8550186	<a href="mailto:ximena.arch@mach1global.com">ximena.arch@mach1global.com</a>	Guadalajara Airport (GDL)
					KWE	Damaris Perez	Tel: (33) 3121 0821   Mobile: (33) 3152 3398	<a href="mailto:Damaris.Perez@am.kwe.com">Damaris.Perez@am.kwe.com</a>	
					Expeditors	Jesus Herrera	+52 (33) 3284 6000   Mobile + 52 (81) 449 895 6477	<a href="mailto:jesus.herrera@expeditors.com">jesus.herrera@expeditors.com</a>	
					Global Airfreight International	Herbert Wong	(65) 9736 6375	<a href="mailto:herbert.wong-bd@globalair.com.sg">herbert.wong-bd@globalair.com.sg</a>	
					DGF	Sofía Muñoz	+52 (449) 1073763	<a href="mailto:sofiamunoz2@dhl.com">sofiamunoz2@dhl.com</a>	
Any Origin	Mexico	Die attach	N/A	Air	KWE	Damaris Perez	Tel: (33) 3121 0821   Mobile: (33) 3152 3398	<a href="mailto:Damaris.Perez@am.kwe.com">Damaris.Perez@am.kwe.com</a>	Guadalajara Airport (GDL)
Asia	Mexico	General Commodity, except mold compound	N/A	Ocean	Mach 1	Ximena Arch	+52 (333) 8550186	<a href="mailto:ximena.arch@mach1global.com">ximena.arch@mach1global.com</a>	Manzanillo Port (ZLO)
					KWE	Damaris Perez	Tel: (33) 3121 0821   Mobile: (33) 3152 3398	<a href="mailto:Damaris.Perez@am.kwe.com">Damaris.Perez@am.kwe.com</a>	
					Expeditors	Jesus Herrera	+52 (33) 3284 6000   Mobile + 52 (81) 449 895 6477	<a href="mailto:jesus.herrera@expeditors.com">jesus.herrera@expeditors.com</a>	
					DGF	Sofía Muñoz	+52 (449) 1073763	<a href="mailto:sofiamunoz2@dhl.com">sofiamunoz2@dhl.com</a>	
Asia	Mexico	Mold Compound	N/A	Ocean	Expeditors	Jesus Herrera	+52 (33) 3284 6000 Mobile + 52 (81) 449 895 6477	<a href="mailto:jesus.herrera@expeditors.com">jesus.herrera@expeditors.com</a>	Manzanillo, MX Port (ZLO)
Laredo, TX	Mexico	Wafers	N/A	Ground	DGF	Sofía Muñoz	+52 (449) 1073763	<a href="mailto:sofiamunoz2@dhl.com">sofiamunoz2@dhl.com</a>	Laredo, TX, DHL WHS

Code Ident 01295

Document number

6523119

Rev Z

Sheet 54 of 79

**14. Shipping to Texas Instruments Philippines Sites**

**14.1. Shipping Instructions to TI Philippines Sites**

- To avoid fines, abide by the INCOTerms and always use the buyer (TI Philippines) forwarders
- Air Forwarders must send advance manifest copies to their Philippines office, prior to departure, for uploading into AMS
- Ocean Forwarders must send advance manifest, to their Philippines office, 24 hours prior to arrival

**14.2. Carrier Selection to TIPI and TIPC**

**Carrier Contact: Destinations**

Origin Country	Dest. Country	Commodity	Weight Break	Mode	Carrier	Name	Phone	e-mail
China - Coastal (PVG)	Philippines	Gen. Commodity, perishable/non perishable goods	<20 kgs	Air	DHLe	Justin Yan	86 21 6536 8888 Ext.3876	<a href="mailto:justin.yan@dhl.com">justin.yan@dhl.com</a>
China - Coastal	Philippines	Gen. Commodity, perishable/non perishable goods	<500 kgs	Air	KWE	Miao Yang	Tel: 86-21-62084088*6109 MP: 86-15001821081	<a href="mailto:miao.yang@kwe.com.cn">miao.yang@kwe.com.cn</a>
China - Coastal	Philippines	Gen. Commodity, perishable/non perishable goods	>500 kgs	Ocean	KWE	Miao Yang	Tel: 86-21-62084088*6109 MP: 86-15001821081	<a href="mailto:miao.yang@kwe.com.cn">miao.yang@kwe.com.cn</a>
China - Non-coastal(C TU)	Philippines	Gen. Commodity, perishable/non perishable goods	<20 kgs	Air	DHLe	Weidan	86 28 85151100 Ext303	<a href="mailto:dan.wei@dhl.com">dan.wei@dhl.com</a>

# Texas Instruments

# Semiconductor Operations

China - Non-coastal	Philippines	Gen. Commodity, perishable/non perishable goods	<1300 kgs	Air	KWE	Miao Yang	Tel: 86-21-62084088*6109 MP: 86-15001821081	<a href="mailto:miao.yang@kwe.com.cn">miao.yang@kwe.com.cn</a>
China - Non-coastal	Philippines	Gen. Commodity, perishable/non perishable goods	1300 < X < 2500 kgs	Air/Ocean	KWE	Miao Yang	Tel: 86-21-62084088*6109 MP: 86-15001821081	<a href="mailto:miao.yang@kwe.com.cn">miao.yang@kwe.com.cn</a>
China - Non-coastal	Philippines	Gen. Commodity, perishable/non perishable goods	>2500 kgs	Ocean	KWE	Miao Yang	Tel: 86-21-62084088*6109 MP: 86-15001821081	<a href="mailto:miao.yang@kwe.com.cn">miao.yang@kwe.com.cn</a>
France	Philippines	Gen. Commodity, perishable/non perishable goods	<1000 kgs	Air	DGF	Renlyn Dizon	+63 998 963 5675	<a href="mailto:Renlyn.Dizon@dhl.com">Renlyn.Dizon@dhl.com</a>
France	Philippines	Gen. Commodity, perishable/non perishable goods	>1000 kgs	Ocean	KWE	Daniel Galke	T: +49 (0) 811 9988 0940 M: +49 (0) 151 1714 6879	<a href="mailto:daniel.galke@ea.kwe.com">daniel.galke@ea.kwe.com</a>
Germany	Philippines	Gen. Commodity, perishable/non perishable goods	<1000 kgs	Air	DGF	Renlyn Dizon	+63 998 963 5675	<a href="mailto:Renlyn.Dizon@dhl.com">Renlyn.Dizon@dhl.com</a>
Germany	Philippines	Gen. Commodity, perishable/non perishable goods	>1000 kgs	Ocean	KWE	Daniel Galke	T: +49 (0) 811 9988 0940 M: +49 (0) 151 1714 6879	<a href="mailto:daniel.galke@ea.kwe.com">daniel.galke@ea.kwe.com</a>



## Texas Instruments Semiconductor Operations

Hong Kong	Philippines	Gen. Commodity, perishable/non perishable goods	<45 kgs	Air	DHLe	Liona Wong	852 2400 3684	<a href="mailto:liona.wong@dhl.com">liona.wong@dhl.com</a>
Hong Kong	Philippines	Gen. Commodity, perishable/non perishable goods	<500 kgs	Air	KWE	Eddie Wong	Direct line: +852-36556531 Mobile: +852-93253579	<a href="mailto:eddie.wong@kwe.com">eddie.wong@kwe.com</a>
Hong Kong	Philippines	Gen. Commodity, perishable/non perishable goods	>500 kgs	Ocean	KWE	Eddie Wong	Direct line: +852-36556531 Mobile: +852-93253579	<a href="mailto:eddie.wong@kwe.com">eddie.wong@kwe.com</a>
Israel	Philippines	Gen. Commodity, perishable/non perishable goods	<1000 kgs	Air	DGF	Renlyn Dizon	+63 998 963 5675	<a href="mailto:Renlyn.Dizon@dhl.com">Renlyn.Dizon@dhl.com</a>
Japan	Philippines	Gen. Commodity, perishable/non perishable goods	<20 kgs	Air	DHLe	Eiichi Fujiyama	81 3 5479 2554	<a href="mailto:eiichi.fujiyama@dhl.com">eiichi.fujiyama@dhl.com</a>
Japan	Philippines	Gen. Commodity, perishable/non perishable goods	<500 kgs	Air	KWE	Ryota Takenaka	Tel : 81-3-6865-1540 Mobile:81-70-2481-4299	<a href="mailto:ryota.takenaka@kwe.com">ryota.takenaka@kwe.com</a>
Japan	Philippines	Gen. Commodity, perishable/non perishable goods	>500 kgs	Ocean	KWE	Ryota Takenaka	Tel : 81-3-6865-1540 Mobile:81-70-2481-4299	<a href="mailto:ryota.takenaka@kwe.com">ryota.takenaka@kwe.com</a>

Code Ident **01295**

Document number

**6523119**

Rev **Z**

Sheet 57 of 79

# Texas Instruments

# Semiconductor Operations

Japan	Philippines	Leadframes	All	Ocean	KWE	Ryota Takenaka	Tel : 81-3-6865-1540 Mobile:81-70-2481-4299	ryota.takenaka@kwe.com
Korea	Philippines	Gen. Commodity, perishable/non perishable goods	<20 kgs	Air	DHLe	Yong Hun Kim	82 2 710 8673	<a href="mailto:yonghun.kim@dhl.com">yonghun.kim@dhl.com</a>
Korea	Philippines	Gen. Commodity, perishable/non perishable goods	<500 kgs	Air	KWE	Jason Kim	Tel: +82-2-3145-0657 Mobile: +82-10-4566-0657	<a href="mailto:jason.kim@kwe.com">jason.kim@kwe.com</a>
Korea	Philippines	Gen. Commodity, perishable/non perishable goods	>500 kgs	Ocean	KWE	Jason Kim	Tel: +82-2-3145-0657 Mobile: +82-10-4566-0657	<a href="mailto:jason.kim@kwe.com">jason.kim@kwe.com</a>
Malaysia	Philippines	Gen. Commodity, perishable/non perishable goods	<20 kgs	Air	DHLe	Malar Murugaiah	603-2241 8054	<a href="mailto:Malarvizhi.Murugaiah@dhl.com">Malarvizhi.Murugaiah@dhl.com</a>
Malaysia	Philippines	Gen. Commodity, perishable/non perishable goods	<500 kgs	Air	KWE	Zahida Mali	603-78062466 6017-2987034	<a href="mailto:zahida.mali@kwe.com">zahida.mali@kwe.com</a> <a href="mailto:kweklia@list.ti.com">kweklia@list.ti.com</a>
Malaysia	Philippines	Gen. Commodity, perishable/non perishable goods	>500 kgs	Ocean	KWE	Zahida Mali	603-78062466 6017-2987034	<a href="mailto:zahida.mali@kwe.com">zahida.mali@kwe.com</a> <a href="mailto:kweklia@list.ti.com">kweklia@list.ti.com</a>

Code Ident **01295**

Document number

**6523119**

Rev **Z**

Sheet 58 of 79

# Texas Instruments

# Semiconductor Operations

Netherlands	Philippines	Gen. Commodity, perishable/non perishable goods	>1000 kgs	Ocean	KWE	Daniel Galke	T: +49 (0) 811 9988 0940 M: +49 (0) 151 1714 6879	<a href="mailto:daniel.galke@ea.kwe.com">daniel.galke@ea.kwe.com</a>
Other-Asia	Philippines	Gen. Commodity, perishable/non perishable goods	<20 kgs	Air	DHLe	Allan Pahuyo	+63 9178437848	<a href="mailto:allan.pahuyo@dhl.com">allan.pahuyo@dhl.com</a>
Other-Asia	Philippines	Gen. Commodity, perishable/non perishable goods	<500 kgs	Air	KWE	Leda Maranan	+639178793642	<a href="mailto:leda.maranan@kwe.com">leda.maranan@kwe.com</a>
Other-Asia	Philippines	Gen. Commodity, perishable/non perishable goods	>500 kgs	Ocean	KWE	Leda Maranan	+639178793642	<a href="mailto:leda.maranan@kwe.com">leda.maranan@kwe.com</a>
Other-Europe	Philippines	Gen. Commodity, perishable/non perishable goods	<1000 kgs	Air	DGF	Renlyn Dizon	+63 998 963 5675	<a href="mailto:Renlyn.Dizon@dhl.com">Renlyn.Dizon@dhl.com</a>
Other-Europe	Philippines	Gen. Commodity, perishable/non perishable goods	>1000 kgs	Ocean	KWE	Daniel Galke	T: +49 (0) 811 9988 0940 M: +49 (0) 151 1714 6879	<a href="mailto:daniel.galke@ea.kwe.com">daniel.galke@ea.kwe.com</a>
Singapore	Philippines	Gen. Commodity, perishable/non perishable goods	<20 kgs	Air	DHLe	Pang Jiehao	65 6880 6579	<a href="mailto:jiehao.pang@dhl.com">jiehao.pang@dhl.com</a>

Code Ident **01295**

Document number

**6523119**

Rev **Z**

Sheet 59 of 79

# Texas Instruments

# Semiconductor Operations

Singapore	Philippines	Gen. Commodity, perishable/non perishable goods	<500 kgs	Air	KWE	Ivan Neo	(T) +65 6548 4662 (HP) +65 9225 7767	<a href="mailto:ivan.neo@kwe.com">ivan.neo@kwe.com</a> <a href="mailto:kwesg-ti@kwe.com">kwesg-ti@kwe.com</a>
Singapore	Philippines	Gen. Commodity, perishable/non perishable goods	>500 kgs	Ocean	KWE	Ivan Neo	(T) +65 6548 4662 (HP) +65 9225 7767	<a href="mailto:ivan.neo@kwe.com">ivan.neo@kwe.com</a> <a href="mailto:kwesg-ti@kwe.com">kwesg-ti@kwe.com</a>
Singapore	Philippines	Leadframes	All	Ocean	KWE	Ivan Neo	(T) +65 6548 4662 (HP) +65 9225 7767	<a href="mailto:ivan.neo@kwe.com">ivan.neo@kwe.com</a> <a href="mailto:kwesg-ti@kwe.com">kwesg-ti@kwe.com</a>
Taiwan	Philippines	Gen. Commodity, perishable/non perishable goods	<20 kgs	Air	DHLe	Sean YS Huang	8862 2508 6206	<a href="mailto:Sean.ys.Huang@dhl.com">Sean.ys.Huang@dhl.com</a>
Taiwan	Philippines	Gen. Commodity, perishable/non perishable goods	<500 kgs	Air	KWE	Sunny Lu	+886-3-262-5990 ext. 3320	<a href="mailto:sunny.lu@kwe.com">sunny.lu@kwe.com</a>
Taiwan	Philippines	Gen. Commodity, perishable/non perishable goods	>500 kgs	Ocean	KWE	Sunny Lu	+886-3-262-5990 ext. 3320	<a href="mailto:sunny.lu@kwe.com">sunny.lu@kwe.com</a>
Taiwan	Philippines	Leadframes	All	Ocean	KWE	Sunny Lu	+886-3-262-5990 ext. 3320	<a href="mailto:sunny.lu@kwe.com">sunny.lu@kwe.com</a>

## Texas Instruments

## Semiconductor Operations

Thailand	Philippines	Gen. Commodity, perishable/non perishable goods	<20 kgs	Air	DHLe	Sivaporn Phoperm	66(9) 0197 7112	<a href="mailto:sivaporn.phoperm@dhl.com">sivaporn.phoperm@dhl.com</a>
Thailand	Philippines	Gen. Commodity, perishable/non perishable goods	<500 kgs	Air	KWE	Piyawan Teenakul	Tel : (662) 792 5999, 515 3888 Mobile : (668)1 875 9422	<a href="mailto:piyawan.teenakul@kwe.com">piyawan.teenakul@kwe.com</a>
Thailand	Philippines	Gen. Commodity, perishable/non perishable goods	>500 kgs	Ocean	KWE	Piyawan Teenakul	Tel : (662) 792 5999, 515 3888 Mobile : (668)1 875 9422	<a href="mailto:piyawan.teenakul@kwe.com">piyawan.teenakul@kwe.com</a>
United Kingdom	Philippines	Gen. Commodity, perishable/non perishable goods	<1000 kgs	Air	DGF	Renlyn Dizon	+63 998 963 5675	<a href="mailto:Renlyn.Dizon@dhl.com">Renlyn.Dizon@dhl.com</a>
United States	Philippines	Gen. Commodity, perishable/non perishable goods	<20 kgs	Air	DHLe	Allan Pahuyo	+63 9178437848	<a href="mailto:allan.pahuyo@dhl.com">allan.pahuyo@dhl.com</a>
United States - Eastern/Pacific	Philippines	Gen. Commodity, perishable/non perishable goods	45 - 1000 kg	Air	DGF	Renlyn Dizon	+63 998 963 5675	<a href="mailto:Renlyn.Dizon@dhl.com">Renlyn.Dizon@dhl.com</a>
United States - Eastern/Pacific	Philippines	Gen. Commodity, perishable/non perishable goods	>1000 kg	Ocean	KWE	Zobeida Anaya	Tel: +1-562-2701695	<a href="mailto:zobeida.anaya@am.kwe.com">zobeida.anaya@am.kwe.com</a>

Code Ident **01295**

Document number **6523119**

Rev **Z**

Sheet 61 of 79

# Texas Instruments

# Semiconductor Operations

United States - Mountain /Central	Philippines	Gen. Commodity, perishable/non perishable goods	45 - 2000 kg	Air	DBS			-
United States - Mountain /Central	Philippines	Gen. Commodity, perishable/non perishable goods	>2000 kg	Ocean	KWE	Zobeida Anaya	Tel: +1-562-2701695	<a href="mailto:zobeida.anaya@am.kwe.com">zobeida.anaya@am.kwe.com</a>
United States	Philippines	Chemical	ALL	Ocean	KWE	Zobeida Anaya	Tel: +1-562-2701695	<a href="mailto:zobeida.anaya@am.kwe.com">zobeida.anaya@am.kwe.com</a>

**15. Shipping to Texas Instruments Taiwan****15.1. Shipping instructions to Texas Instruments Taiwan Limited****Shipping guide:****I. Material**

- a. Material shipped **Intra Asia** (non-temperature control requested)
  - i. Material with chargeable weight equal to/over 350kgs should be shipped via sea mode.
  - ii. Management approval
    - 1. TI AT (TITL): Site manger's is required for material with chargeable weight equal to/over 350kgs shipped via air.
    - 2. TW Subcon/Foundry: EM Manager's and/or Director's approval is required for material with chargeable weight equal to/ over 350kgs via air.
- b. Temperature Controlled Material shipped **Intra Asia**
  - i. Material with chargeable weight over 1,000kgs should be via sea mode.
  - ii. Management approval
    - 1. TI AT (TITL): Site Manager's approval is required for material with chargeable weight equal to/over 1000kgs shipped via air.
    - 2. TW Subcon/Foundry: EM Manager's and/or Director's is required for material with chargeable weight equal to/ over 1000kgs via air.
- c. Material from EU/US
  - i. Material with chargeable weight over 1000kgs should be shipped via sea mode
  - ii. Management approval for oceanable shipments sent via air
    - 1. TI AT (TITL): Site Manager's
    - 2. TW Subcon/Foundry: EM Manager's/Director's approval

**II. Capital/Equipment**

- a. Intra Asia
  - i. Capital/Equipment with chargeable weight equal to/over 500kgs should be shipped via sea mode.
  - ii. Management approval is requested for capital/equipment with chargeable weight over 500kgs shipped via air.
- b. EU
  - i. Capital/Equipment with chargeable weight equal to/over 1000kgs should be shipped via sea mode.
  - ii. Management approval is requested for capital/equipment with chargeable weight over 1000kgs shipped via air.
- c. US
  - i. West coast
    - 1. Capital/Equipment with chargeable weight equal to/over 1000kgs should be shipped via sea mode.

2. Management approval is requested for capital/equipment with chargeable weight over 1000kgs shipped via air.
- ii. Central/Eastern of US
  1. Capital/Equipment with chargeable weight equal to/over 2000kgs should be shipped via sea mode
  2. Management approval is requested for capital/equipment with chargeable weight over 2000kgs shipped via air.
- d. Management approval for oceanable shipment via air
  1. TI TW: Site Manager + Make approval
  2. EM: Make approval

### III. Sensitive material, spare parts and etc...

There is import license/regulation for sensitive materials such as chemical and battery. Please ensure the awareness and compliance of import regulation. Below products are for reference only but not limited to:

- a. Battery may be shipped separately from capital.
- b. Automatic data processing related products may be subject to import license.
- c. Wireless related products are subject to import license.
- d. China made product is subject to import license or not allowed to TW.

### IV. Carrier preferred

- a. Intra Asia
  - i. AIR: KWE
  - ii. Material (temperature control not requested) via sea: KWE
  - iii. Material (reefer container/temperature control requested) via sea: Expeditors
  - iv. Capital/Equipment via sea: KWE
- b. EU
  - i. Air
    1. General cargo (non-temperature control): DGF
    2. Temperature control: TBA
    3. Capital: DGF
  - ii. Capital/equipment via sea: KWE
  - iii. Material via sea: TBA
- c. US
  - i. Air
    1. General cargo (non-temperature control): DGF
    2. Temperature control: KWE
    3. Capital: Please check with TITL
  - ii. Capital/equipment via sea: KWE
  - iii. Material via sea: TBA
- d. No exception is accepted w/o pre-communication/confirmation.
- e. Documentation
  - i. Please provide shipping document with signature which is required by Customs.



- ii. Please state "used equipment" and manufacturing year/net weight on invoice if applicable.
- iii. Please state "brand" name/model name of the capital.
- iv. Please state "Texas Instruments Taiwan Limited c/o subcon" for internal transfer equipment to subcon/foundry.
- v. Please provide HTS for declaration purpose.

f. Other considerations

- i. No "dry ice" shipments via Express service is allowed

V. TI TW Logistics contact

Jack Cheng

Email: [y-cheng@ti.com](mailto:y-cheng@ti.com)

[import-titl@list.ti.com](mailto:import-titl@list.ti.com)

Phone: +886-2-29435141# 6584

Lisa Tan

Email: [lisa\\_t@ti.com](mailto:lisa_t@ti.com)

Phone: +886-2-29435141# 6565

## 15.2. Carrier Selection to TI Taiwan

Origin Country	Dest. Country	Commodity	Hazardous?	Weight Break	Mode	Carrier	Account #	Name	Phone	e-mail
China - Coastal cities	Taiwan	General Commodity (Non-Temperature control)	No	<350kgs	Air	KWE	N/A	Kathy Lin Abigail Yuan Sunny Lu	886-3-262-5990 #3342 886-3-262-5990 #3362 886-3-262-5990 #3320 886-939555681	<a href="mailto:kathy.lin@kwe.com">kathy.lin@kwe.com</a> <a href="mailto:abigail.yuan@kwe.com">abigail.yuan@kwe.com</a> <a href="mailto:sunny.lu@kwe.com">sunny.lu@kwe.com</a>
China - Coastal cities	Taiwan	General Commodity (Non-Temperature control)	No	>=350kgs	Ocean	KWE	N/A	Vivian Feng Vincent Tsai	886-2-25063151 #1241 886-928506588	vivian.feng@kwe.com vincent.tsai@kwe.com
China - Coastal cities	Taiwan	General Commodity (Temperature control)	Yes	<1000kgs	Air	DGF	N/A	Kelly Chang Joy Hsiao Samantha Yip	886-3-3992177 #3309 886-2-66038220 886-910948268 886-3-3992177 #3700	Kelly.H.Chang@dhl.com joy.hsiao@dhl.com samantha.yip@dhl.com
China - Coastal cities	Taiwan	General Commodity (Temperature control)	No	>=1000kgs	Ocean	Expeditors	N/A	Mchale Lee Claudia Kao	886-963-271-959 886-2-2713-2145 #55911	<a href="mailto:Mchale.Lee@expeditors.com">Mchale.Lee@expeditors.com</a> <a href="mailto:claudia.kao@expeditors.com">claudia.kao@expeditors.com</a>
China - Coastal cities	Taiwan	Capital	No	<500kgs	Air	KWE	N/A	Kathy Lin Abigail Yuan Sunny Lu	8886-3-262-5990 #3342 886-3-262-5990 #3362 886-3-262-5990 #3320 886-939555681	<a href="mailto:kathy.lin@kwe.com">kathy.lin@kwe.com</a> <a href="mailto:abigail.yuan@kwe.com">abigail.yuan@kwe.com</a> <a href="mailto:sunny.lu@kwe.com">sunny.lu@kwe.com</a>
China - Coastal cities	Taiwan	Capital	No	>=500kgs	Ocean	KWE	N/A	Vivian Feng Vincent Tsai	886-2-25063151 #1241 886-928506588	vivian.feng@kwe.com vincent.tsai@kwe.com
Germany	Taiwan	General Commodity (Non-Temperature control)	No	<1000kgs	Air	DGF	N/A	Kelly Chang Joy Hsiao Samantha Yip	886-3-3992177 #3309 886-2-66038220 886-910948268 886-3-3992177 #3700	Kelly.H.Chang@dhl.com joy.hsiao@dhl.com samantha.yip@dhl.com

# Texas Instruments

# Semiconductor Operations

Germany	Taiwan	Capital	No	<1000kgs	Air	DGF	N/A	Kelly Chang Joy Hsiao Samantha Yip	886-3-3992177 #3309 886-2-66038220 886-910948268 886-3-3992177 #3700	Kelly.H.Chang@dhl.com joy.hsiao@dhl.com samantha.yip@dhl.com
Germany	Taiwan	Capital	No	>=1000kgs	Ocean	KWE	N/A	Vivian Feng Vincent Tsai	886-2-25063151 #1241 886-928506588	vivian.feng@kwe.com vincent.tsai@kwe.com
HongKong	Taiwan	General Commodity (Non-Temperature control)	No	<=10kgs	Air	FedEx	AC#228 536393	Jessie Wang May Liao AC#22853639 3	886-2-25369076 886-3-602-9519 886-905059180	jwang6@fedex.com chih-hsuan.liao@fedex.com TWPC@fedex.com
HongKong	Taiwan	General Commodity (Non-Temperature control)	No	10-350kgs	Air	KWE	N/A	Kathy Lin Abigail Yuan Sunny Lu	8886-3-262-5990 #3342 886-3-262-5990 #3362 886-3-262-5990 #3320 886-939555681	<a href="mailto:kathy.lin@kwe.com">kathy.lin@kwe.com</a> <a href="mailto:abigail.yuan@kwe.com">abigail.yuan@kwe.com</a> <a href="mailto:sunny.lu@kwe.com">sunny.lu@kwe.com</a>
HongKong	Taiwan	General Commodity (Non-Temperature control)	No	>=350kgs	Ocean	KWE	N/A	Vivian Feng Vincent Tsai	886-2-25063151 #1241 886-928506588	vivian.feng@kwe.com vincent.tsai@kwe.com
HongKong	Taiwan	Capital	No	<500kgs	Air	KWE	N/A	Kathy Lin Abigail Yuan Sunny Lu	8886-3-262-5990 #3342 886-3-262-5990 #3362 886-3-262-5990 #3320 886-939555681	<a href="mailto:kathy.lin@kwe.com">kathy.lin@kwe.com</a> <a href="mailto:abigail.yuan@kwe.com">abigail.yuan@kwe.com</a> <a href="mailto:sunny.lu@kwe.com">sunny.lu@kwe.com</a>
HongKong	Taiwan	Capital	No	>=500kgs	Ocean	KWE	N/A	Vivian Feng Vincent Tsai	886-2-25063151 #1241 886-928506588	vivian.feng@kwe.com vincent.tsai@kwe.com
Japan	Taiwan	General Commodity (Non-Temperature control)	No	<350kgs	Air	KWE	N/A	Kathy Lin Abigail Yuan Sunny Lu	886-3-262-5990 #3342 886-3-262-5990 #3362 886-3-262-5990 #3320 886-939555681	<a href="mailto:kathy.lin@kwe.com">kathy.lin@kwe.com</a> <a href="mailto:abigail.yuan@kwe.com">abigail.yuan@kwe.com</a> <a href="mailto:sunny.lu@kwe.com">sunny.lu@kwe.com</a>
Japan	Taiwan	General Commodity (Non-Temperature control)	No	>=350kgs	Ocean	KWE	N/A	Vivian Feng Vincent Tsai	886-2-25063151 #1241 886-928506588	vivian.feng@kwe.com vincent.tsai@kwe.com
Japan	Taiwan	General Commodity (Temperature control)	Yes	<1000kgs	Air	KWE	N/A	Kathy Lin Abigail Yuan Sunny Lu	886-3-262-5990 #3342 886-3-262-5990 #3362 886-3-262-5990 #3320 886-939555681	<a href="mailto:kathy.lin@kwe.com">kathy.lin@kwe.com</a> <a href="mailto:abigail.yuan@kwe.com">abigail.yuan@kwe.com</a> <a href="mailto:sunny.lu@kwe.com">sunny.lu@kwe.com</a>
Japan	Taiwan	General Commodity (Temperature control)	No	>=1000kgs	Ocean	Expeditors	N/A	Mchale Lee Claudia Kao	886-963-271-959 886-2-2713-2145 #55911	<a href="mailto:Mchale.Lee@expeditors.com">Mchale.Lee@expeditors.com</a> <a href="mailto:claudia.kao@expeditors.com">claudia.kao@expeditors.com</a>

# Texas Instruments

# Semiconductor Operations

Japan	Taiwan	Capital	No	<500kgs	Air	KWE	N/A	Kathy Lin Abigail Yuan Sunny Lu	886-3-262-5990 #3342 886-3-262-5990 #3362 886-3-262-5990 #3320 886-939555681	<a href="mailto:kathy.lin@kwe.com">kathy.lin@kwe.com</a> <a href="mailto:abigail.yuan@kwe.com">abigail.yuan@kwe.com</a> <a href="mailto:sunny.lu@kwe.com">sunny.lu@kwe.com</a>
Japan	Taiwan	Capital	No	>=500kgs	Ocean	KWE	N/A	Vivian Feng Vincent Tsai	886-2-25063151 #1241 886-928506588	vivian.feng@kwe.com vincent.tsai@kwe.com
Korea	Taiwan	General Commodity (Non-Temperature control)	No	<=10kgs	Air	FedEx	AC#228 536393	Jessie Wang May Liao AC#22853639 3	886-2-25369076 886-3-602-9519 886-905059180	jwang6@fedex.com chih-hsuan.liao@fedex.com TWPC@fedex.com
Korea	Taiwan	General Commodity (Non-Temperature control)	No	10-350kgs	Air	KWE	N/A	Kathy Lin Abigail Yuan Sunny Lu	886-3-262-5990 #3342 886-3-262-5990 #3362 886-3-262-5990 #3320 886-939555681	<a href="mailto:kathy.lin@kwe.com">kathy.lin@kwe.com</a> <a href="mailto:abigail.yuan@kwe.com">abigail.yuan@kwe.com</a> <a href="mailto:sunny.lu@kwe.com">sunny.lu@kwe.com</a>
Korea	Taiwan	General Commodity (Non-Temperature control)	No	>=350kgs	Ocean	KWE	N/A	Vivian Feng Vincent Tsai	886-2-25063151 #1241 886-928506588	vivian.feng@kwe.com vincent.tsai@kwe.com
Korea	Taiwan	General Commodity (Temperature control)	Yes	<1000kgs	Air	KWE	N/A	Kathy Lin Abigail Yuan Sunny Lu	886-3-262-5990 #3342 886-3-262-5990 #3362 886-3-262-5990 #3320 886-939555681	<a href="mailto:kathy.lin@kwe.com">kathy.lin@kwe.com</a> <a href="mailto:abigail.yuan@kwe.com">abigail.yuan@kwe.com</a> <a href="mailto:sunny.lu@kwe.com">sunny.lu@kwe.com</a>
Korea	Taiwan	Capital	No	<500kgs	Air	KWE	N/A	Kathy Lin Abigail Yuan Sunny Lu	886-3-262-5990 #3342 886-3-262-5990 #3362 886-3-262-5990 #3320 886-939555681	<a href="mailto:kathy.lin@kwe.com">kathy.lin@kwe.com</a> <a href="mailto:abigail.yuan@kwe.com">abigail.yuan@kwe.com</a> <a href="mailto:sunny.lu@kwe.com">sunny.lu@kwe.com</a>
Korea	Taiwan	Capital	No	>=500kgs	Ocean	KWE	N/A	Vivian Feng Vincent Tsai	886-2-25063151 #1241 886-928506588	vivian.feng@kwe.com vincent.tsai@kwe.com
Malaysia	Taiwan	General Commodity (Non-Temperature control)	No	<=40kgs	Air	FedEx	AC#228 536393	Jessie Wang May Liao AC#22853639 3	886-2-25369076 886-3-602-9519 886-905059180	jwang6@fedex.com chih-hsuan.liao@fedex.com TWPC@fedex.com
Malaysia	Taiwan	General Commodity (Non-Temperature control)	No	41-350kgs	Air	KWE	N/A	Kathy Lin Abigail Yuan Sunny Lu	886-3-262-5990 #3342 886-3-262-5990 #3362 886-3-262-5990 #3320 886-939555681	<a href="mailto:kathy.lin@kwe.com">kathy.lin@kwe.com</a> <a href="mailto:abigail.yuan@kwe.com">abigail.yuan@kwe.com</a> <a href="mailto:sunny.lu@kwe.com">sunny.lu@kwe.com</a>

# Texas Instruments

# Semiconductor Operations

Malaysia	Taiwan	General Commodity (Non-Temperature control)	No	>=350kgs	Ocean	KWE	N/A	Vivian Feng Vincent Tsai	886-2-25063151 #1241 886-928506588	vivian.feng@kwe.com vincent.tsai@kwe.com
Malaysia	Taiwan	General Commodity (Temperature control)	Yes	<1000kgs	Air	KWE	N/A	Kathy Lin Abigail Yuan Sunny Lu	886-3-262-5990 #3342 886-3-262-5990 #3362 886-3-262-5990 #3320 886-939555681	<a href="mailto:kathy.lin@kwe.com">kathy.lin@kwe.com</a> <a href="mailto:abigail.yuan@kwe.com">abigail.yuan@kwe.com</a> <a href="mailto:sunny.lu@kwe.com">sunny.lu@kwe.com</a>
Malaysia	Taiwan	General Commodity (Temperature control)	No	>=1000kgs	Ocean	Expeditors	N/A	Mchale Lee Claudia Kao	886-963-271-959 886-2-2713-2145 #55911	<a href="mailto:Mchale.Lee@expeditors.com">Mchale.Lee@expeditors.com</a> <a href="mailto:claudia.kao@expeditors.com">claudia.kao@expeditors.com</a>
Malaysia	Taiwan	Capital	No	<500kgs	Air	KWE	N/A	Kathy Lin Abigail Yuan Sunny Lu	886-3-262-5990 #3342 886-3-262-5990 #3362 886-3-262-5990 #3320 886-939555681	<a href="mailto:kathy.lin@kwe.com">kathy.lin@kwe.com</a> <a href="mailto:abigail.yuan@kwe.com">abigail.yuan@kwe.com</a> <a href="mailto:sunny.lu@kwe.com">sunny.lu@kwe.com</a>
Malaysia	Taiwan	Capital	No	>=500kgs	Ocean	KWE	N/A	Vivian Feng Vincent Tsai	886-2-25063151 #1241 886-928506588	vivian.feng@kwe.com vincent.tsai@kwe.com
Philippines	Taiwan	General Commodity (Non-Temperature control)	No	<=10kgs	Air	FedEx	AC#228 536393	Jessie Wang May Liao AC#22853639 3	886-2-25369076 886-3-602-9519 886-905059180	jwang6@fedex.com chih-hsuan.liao@fedex.com TWPC@fedex.com
Philippines	Taiwan	General Commodity (Non-Temperature control)	No	10-350kgs	Air	KWE	N/A	Kathy Lin Abigail Yuan Sunny Lu	886-3-262-5990 #3342 886-3-262-5990 #3362 886-3-262-5990 #3320 886-939555681	<a href="mailto:kathy.lin@kwe.com">kathy.lin@kwe.com</a> <a href="mailto:abigail.yuan@kwe.com">abigail.yuan@kwe.com</a> <a href="mailto:sunny.lu@kwe.com">sunny.lu@kwe.com</a>
Philippines	Taiwan	General Commodity (Non-Temperature control)	No	>=350kgs	Ocean	KWE	N/A	Vivian Feng Vincent Tsai	886-2-25063151 #1241 886-928506588	vivian.feng@kwe.com vincent.tsai@kwe.com
Philippines	Taiwan	Capital	No	<500kgs	Air	KWE	N/A	Kathy Lin Abigail Yuan Sunny Lu	886-3-262-5990 #3342 886-3-262-5990 #3362 886-3-262-5990 #3320 886-939555681	<a href="mailto:kathy.lin@kwe.com">kathy.lin@kwe.com</a> <a href="mailto:abigail.yuan@kwe.com">abigail.yuan@kwe.com</a> <a href="mailto:sunny.lu@kwe.com">sunny.lu@kwe.com</a>
Philippines	Taiwan	Capital	No	>=500kgs	Ocean	KWE	N/A	Vivian Feng Vincent Tsai	886-2-25063151 #1241 886-928506588	vivian.feng@kwe.com vincent.tsai@kwe.com

# Texas Instruments

# Semiconductor Operations

Singapore	Taiwan	General Commodity (Non-Temperature control)	No	<=40kgs	Air	FedEx	AC#228 536393	Jessie Wang May Liao AC#22853639 3	886-2-25369076 886-3-602-9519 886-905059180	jwang6@fedex.com chih-hsuan.liao@fedex.com TWPC@fedex.com
Singapore	Taiwan	General Commodity (Non-Temperature control)	No	41-350kgs	Air	KWE	N/A	Kathy Lin Abigail Yuan Sunny Lu	886-3-262-5990 #3342 886-3-262-5990 #3362 886-3-262-5990 #3320 886-939555681	<a href="mailto:kathy.lin@kwe.com">kathy.lin@kwe.com</a> <a href="mailto:abigail.yuan@kwe.com">abigail.yuan@kwe.com</a> <a href="mailto:sunny.lu@kwe.com">sunny.lu@kwe.com</a>
Singapore	Taiwan	General Commodity (Non-Temperature control)	No	>=350kgs	Ocean	KWE	N/A	Vivian Feng Vincent Tsai	886-2-25063151 #1241 886-928506588	vivian.feng@kwe.com vincent.tsai@kwe.com
Singapore	Taiwan	General Commodity (Temperature control)	No	<1000kgs	Air	KWE	N/A	Kathy Lin Abigail Yuan Sunny Lu	886-3-262-5990 #3342 886-3-262-5990 #3362 886-3-262-5990 #3320 886-939555681	<a href="mailto:kathy.lin@kwe.com">kathy.lin@kwe.com</a> <a href="mailto:abigail.yuan@kwe.com">abigail.yuan@kwe.com</a> <a href="mailto:sunny.lu@kwe.com">sunny.lu@kwe.com</a>
Singapore	Taiwan	Capital	No	<500kgs	Air	KWE	N/A	Kathy Lin Abigail Yuan Sunny Lu	886-3-262-5990 #3342 886-3-262-5990 #3362 886-3-262-5990 #3320 886-939555681	<a href="mailto:kathy.lin@kwe.com">kathy.lin@kwe.com</a> <a href="mailto:abigail.yuan@kwe.com">abigail.yuan@kwe.com</a> <a href="mailto:sunny.lu@kwe.com">sunny.lu@kwe.com</a>
Singapore	Taiwan	Capital	No	>=500kgs	Ocean	KWE	N/A	Vivian Feng Vincent Tsai	886-2-25063151 #1241 886-928506588	vivian.feng@kwe.com vincent.tsai@kwe.com
Thailand	Taiwan	General Commodity (Non-Temperature control)	No	<350kgs	Air	KWE	N/A	Kathy Lin Abigail Yuan Sunny Lu	886-3-262-5990 #3342 886-3-262-5990 #3362 886-3-262-5990 #3320 886-939555681	<a href="mailto:kathy.lin@kwe.com">kathy.lin@kwe.com</a> <a href="mailto:abigail.yuan@kwe.com">abigail.yuan@kwe.com</a> <a href="mailto:sunny.lu@kwe.com">sunny.lu@kwe.com</a>
Thailand	Taiwan	General Commodity (Non-Temperature control)	No	>=350kgs	Ocean	KWE	N/A	Vivian Feng Vincent Tsai	886-2-25063151 #1241 886-928506588	vivian.feng@kwe.com vincent.tsai@kwe.com
Thailand	Taiwan	Capital	No	<500kgs	Air	KWE	N/A	Kathy Lin Abigail Yuan Sunny Lu	886-3-262-5990 #3342 886-3-262-5990 #3362 886-3-262-5990 #3320 886-939555681	<a href="mailto:kathy.lin@kwe.com">kathy.lin@kwe.com</a> <a href="mailto:abigail.yuan@kwe.com">abigail.yuan@kwe.com</a> <a href="mailto:sunny.lu@kwe.com">sunny.lu@kwe.com</a>
Thailand	Taiwan	Capital	No	>=500kgs	Ocean	KWE	N/A	Vivian Feng Vincent Tsai	886-2-25063151 #1241 886-928506588	vivian.feng@kwe.com vincent.tsai@kwe.com

# Texas Instruments

# Semiconductor Operations


United States	Taiwan	General Commodity (Non-Temperature control)	No	<1000kgs	Air	DGF	N/A	Kelly Chang Joy Hsiao Samantha Yip	886-3-3992177 #3309 886-2-66038220 886-910948268 886-3-3992177 #3700	Kelly.H.Chang@dhl.com joy.hsiao@dhl.com samantha.yip@dhl.com
United States	Taiwan	General Commodity (Temperature control)	No	<1000kgs	Air	KWE	N/A	Kathy Lin Abigail Yuan Sunny Lu	886-3-262-5990 #3342 886-3-262-5990 #3362 886-3-262-5990 #3320 886-939555681	<a href="mailto:kathy.lin@kwe.com">kathy.lin@kwe.com</a> <a href="mailto:abigail.yuan@kwe.com">abigail.yuan@kwe.com</a> <a href="mailto:sunny.lu@kwe.com">sunny.lu@kwe.com</a>
United States (Western)	Taiwan	Capital	No	<1000kgs	Air	TBA	N/A			
United States (Western)	Taiwan	Capital	No	>=1000kgs	Ocean	KWE	N/A	Vivian Feng Vincent Tsai	886-2-25063151 #1241 886-928506588	vivian.feng@kwe.com vincent.tsai@kwe.com
United States (Others)	Taiwan	Capital	No	<2000kgs	Air	TBA	N/A			
United States (Others)	Taiwan	Capital	No	>=2000kgs	Ocean	KWE	N/A	Vivian Feng Vincent Tsai	886-2-25063151 #1241 886-928506588	vivian.feng@kwe.com vincent.tsai@kwe.com

Main TI'er(s) Contact info for the Routing Center: Especially Capital Equipment

Name	Email	Phone
Jack Cheng	<a href="mailto:y-cheng@ti.com">y-cheng@ti.com</a>	+886-2-29435141# 6584
TITL Inbound team	<a href="mailto:import-titl@list.ti.com">import-titl@list.ti.com</a>	
Lisa Tan	<a href="mailto:lisa_t@ti.com">lisa_t@ti.com</a>	+886-2-29435141# 6565

# Appendix

a) [Capital Equipment Air Shipment Request Form](#)

		Texas Instruments CAP Air Quotation Request Form	
Required Information	Description	Shipper Input	
Product Name	<i>Common name to use for communication</i>		
TI PO No			
Mode of Shipping	<i>Air or Sea</i>		
Sensitiveness of Capital Equipment			
Shock Watch	<i>What G?</i>		
Tilt Watch	<i>Yes or No</i>		
Temperature Control	<i>Yes or No - if yes what degree</i>		
Packing Detail	<i>Packing List to be provided separately</i>		
Incoterms	<i>XXX at where</i>		
Cargo Ready Date	<i>Cargo Ready Date at hand over to carrier</i>		
Delivery Due Date	<i>Delivery Due Date at where</i>		
Crating	<i>Yes or No</i>		
Pick Up Address	<i>If pick up is required (based on Incoterms)</i>		
Delivery Address	<i>If delivery is required</i>		
<i>*Save form with date of request in the file name</i>			





c) [Non Capital Equipment Request Form](#)



**TEXAS  
INSTRUMENTS**

**Texas Instruments General Shipment  
Request Form**

**Required Information**

**Shipper Input**

TI PO Number:	
Product Description:	
Origin:	
Destination:	
Quantity:	
Diminsions:	
Weight:	
Receiver Contact:	
Pick-Up Date:	
Delivery Date:	
Needs Crating?:	
Needs Palletization?:	
Comments/ Special Instructions:	

*\*Save form with date of request in the file name*

**d) TI Destination Site Names and Abbreviations**

Location	Name	Abbreviation	City	Physical Address
<b>TI United States</b>				
	TI Texas	TI-TX		
	North Campus	DMOS 5	Dallas, TX	13353 TI Blvd. DMOS 5 (DOCK 3 or Dock 7)
	North Campus	DMOS 6	Dallas, TX	13011 TI Blvd Dallas TX 72423 (DMOS 6)
	North Campus	DFAB	Dallas, TX	
	SC Building			13532 N CENTRAL EXPRESSWAY, SC BLDG.
	South Building			13536 N CENTRAL EPXRESSWAY SOUTH BLDG
	Cup Building			13590 N CENTRAL EXPRESSWAY CUP BLDG
	Kilby East			13560 N CENTRAL EXPRESSWAY KILBY EAST
	Kilby West			13570 N CENTRAL EXPRESSWAY KILBY WEST
	PAC Building			13020 TI BLVD – DSB (PAC BLDG)
	South Campus/ Forest Lane			12500 TI Blvd (Forest Lane)
	TI Sherman	SFAB	Sherman, TX	6412 Highway 75 South East Bldg. Sherman TX (SFAB)
	TI Austin		Austin, TX	
	TI Houston		Houston, TX	
	TI Richardson	RFAB	Richardson, TX	3601 Alma Road Richardson TX (RFAB)
	Alliance PDC		Fort Worth, TX	13601 Independence Parkway Ft Worth TX 76177
	Lewisville Distribution Center	LDC	Lewisville, TX	2501 S Business Hwy 121 Lewisville TX
	TI Maine	MFAB	Portland, Maine	5 Foden Road South Portland ME (MFAB)
	TI California	Santa Clara		2900 Semiconductor Dr Santa Clara CA
	TI Arizona	TFAB		5411 E Williams Blvd Tucson AZ
<b>TI China</b>				
	TI Chengdu	TICD	Chengdu	
	TI Shanghai		Shanghai	
<b>TI Germany</b>				
		TID	Freising, Germany	
<b>TI India</b>				
			Bangalore	
<b>TI Japan</b>				
		TIJ	Tokyo	
			Aizuwakamatsushi	
<b>TI Malaysia</b>				
	TI Electronics Malaysia	TIM	Kuala Lampor	
		TIEM	Melaka	
<b>TI Mexico</b>				
		TIMX	Aquascalientes	
<b>TI Philippines</b>				
	TI Philippines Clark	TIPI	Baiguo city	
		TIPC	Angeles City, Pampanga	
<b>TI United Kingdom</b>				
		GFAB	Greenock, Scotland	
<b>TI Taiwan</b>				
		TITL	Taipei	

e) TI Logistics Site Contacts

TI Logistics Contacts			
Country	Name	E-mail	Phone
Global Transportation Mgr	Jeff Loewecke	<a href="mailto:j-loewecke@ti.com">j-loewecke@ti.com</a>	+1 214-567-4819
USA - Capital	Frank Wang	<a href="mailto:y-wang9@ti.com">y-wang9@ti.com</a>	+1 214-479-4649
USA - Freight	Elizabeth Wilson	<a href="mailto:elizabeth.wilson@ti.com">elizabeth.wilson@ti.com</a>	+1 214-479-8175
USA - Customer Service	Steve Gilboux	<a href="mailto:s-gilboux@ti.com">s-gilboux@ti.com</a>	+1 214-479-1102
USA - Maine	Keir Peterson	<a href="mailto:keir.peterson@ti.com">keir.peterson@ti.com</a>	+1 207-618-4646
USA - Santa Clara CA	John Epperson	<a href="mailto:john.epperson@ti.com">john.epperson@ti.com</a>	+1 669 721 3401
Asia - Manager	Kenneth Zhang	<a href="mailto:kenneth-zhang@ti.com">kenneth-zhang@ti.com</a>	+8623073577
China - Manager	Tyler Huang	<a href="mailto:tyler-huang@ti.com">tyler-huang@ti.com</a>	+86-21-23073240
China - Chengdu	Jenny Xi	<a href="mailto:j-xi@ti.com">j-xi@ti.com</a>	+86 13693459634 ext. 61211
China - Chengdu	Nick Huang	<a href="mailto:nick_huang@ti.com">nick_huang@ti.com</a>	+86-28-87681188 ext.69242
China - Chengdu	Terry Tang	<a href="mailto:h-tang@ti.com">h-tang@ti.com</a>	86-28-87681188 69316
India	Aman Rawat	<a href="mailto:amanrawat@ti.com">amanrawat@ti.com</a>	
Germany	Stefan Pichlmeier	<a href="mailto:s-pichlmeier@ti.com">s-pichlmeier@ti.com</a>	+498161804620
Germany	Gabi Klose	<a href="mailto:Gabi.Klose@ti.com">Gabi.Klose@ti.com</a>	+49 8161 80 4056
Germany	Tanja Riess	<a href="mailto:t-riess@ti.com">t-riess@ti.com</a>	+498161803544
Japan	Mitsuhiro Kinoshita	<a href="mailto:m-kinoshita@ti.com">m-kinoshita@ti.com</a>	+81-3-4331-7163
Japan - Aizu Make Logistics	Kazuya Hirano	<a href="mailto:kazuya.hirano@ti.com">kazuya.hirano@ti.com</a>	+81 242 39 3625
Korea	Judy Cho	<a href="mailto:judycho@ti.com">judycho@ti.com</a>	+82 02 560 6806
Malaysia - Logistics Manager	Choon Haw Tang	<a href="mailto:ch-tang@ti.com">ch-tang@ti.com</a>	+6 03 4264 3147
Malaysia - Kuala Lumpur	Kalainisha Dewi	<a href="mailto:kalainisha@ti.com">kalainisha@ti.com</a>	+60 03-4264-3134
Malaysia - Outbound/PDC	Ling Sing Liang	<a href="mailto:s-ling1@ti.com">s-ling1@ti.com</a>	+60 342643624
Malaysia - Trade Compliance/Customs	Lee Fong Fong	<a href="mailto:Fong.Fong.Lee@ti.com">Fong.Fong.Lee@ti.com</a>	606-2515-503
Malaysia Melaka TIEM - P&L Manager	SG Ng	<a href="mailto:SG.Ng@ti.com">SG.Ng@ti.com</a>	
Malaysia - Melaka TIEM Log. Manager	Doris Tee	<a href="mailto:Doris.Tee.Shu.Wan@ti.com">Doris.Tee.Shu.Wan@ti.com</a>	06-2515 496
Malaysia - Melaka	Li Heng Ong	<a href="mailto:l-ong@ti.com">l-ong@ti.com</a>	+60 06-251 5693
Mexico - Director	Jesus Rodriguez	<a href="mailto:j-rodriguez13@ti.com">j-rodriguez13@ti.com</a>	+52 449 175 1406
Mexico - Logistics	Lecticia Alvarado	<a href="mailto:l-alvarado@ti.com">l-alvarado@ti.com</a>	+52 449 175 1271
Mexico - PDC	Fernando Medellin	<a href="mailto:f-medellin@ti.com">f-medellin@ti.com</a>	
Phillipines - Clark & Baguio / Manager	Brian Calinao	<a href="mailto:b-calinao1@ti.com">b-calinao1@ti.com</a>	+63 45 406 8418
Phillipines - Clark	Jennifer Ayson	<a href="mailto:j-ayson1@ti.com">j-ayson1@ti.com</a>	4068586
Phillippines - Clark Outbound	Aime Villanueva	<a href="mailto:a-villanueva@ti.com">a-villanueva@ti.com</a>	
Phillipines - Baguio City	Steve Floresca	<a href="mailto:s-floresca@ti.com">s-floresca@ti.com</a>	+63 74 4471100 2745
Singapore/Thailand - Manager	Dennis Cheng	<a href="mailto:dennis.cheng@ti.com">dennis.cheng@ti.com</a>	+65 63894774
Taiwan - Manager	Sharon Lu	<a href="mailto:sharon.lu@ti.com">sharon.lu@ti.com</a>	+886-2-29435141 6226
Taiwan - Inbound	Olive Chen	<a href="mailto:olive.chen@ti.com">olive.chen@ti.com</a>	+886-2-2943-5141 #6754
Taiwan - Outbound	Anica Wu	<a href="mailto:anica.wu@ti.com">anica.wu@ti.com</a>	+866 29435141 #6316
UK	Fay Morrison	<a href="mailto:fay.morrison@ti.com">fay.morrison@ti.com</a>	+44 1475 655298
UK	Richard Kerrigan	<a href="mailto:richard.kerrigan@ti.com">richard.kerrigan@ti.com</a>	+44 1475 655017

f) TI Freight Forwarder Names and Abbreviations

<b>TI Freight Forwarders</b>	
<b>Name</b>	<b>Acronym</b>
APL Logistics	APLL
Kintetsu World Express	KWE
DB Schenker	DBS
DHL Express	DHL <sub>e</sub>
DHL	-
DHL Global Forwarding	DGF
FedEx	-
JSI Shipping	JSI
Secureforce	SCF
JAS Shipping	JAS
Mach 1	-
DHL Freight	DHL <sub>f</sub>
Evergreen	EG

## Revisions

Revision	Description
A	ECO #2112059, 11/30/10, I. Tamez, S. Yager 1) Formal Release
B	ECO #2115881, 05/16/11, M. Murray, S. Yager: 1) Added TI banner, 2) Required Shipping Documents: Sec 1e – Replaced ECCN with HTS number, Sec 2 Removed Invoice number and date, PO and line item number, and “carton number”, 3) Added “dimensional measurement”, 4) Sec 3 Removed Invoice number and date, 5) Added “dimensional measurement”, 6) removed Sec 3d’s reference to “outline on page 4 of guide”, 7) Updated carrier selection sheets for TIM/TIPI/TITL/TIMX
C	ECO #2118618, 09/14/11, M. Murray, S. Yager; – General Instructions Sec 1.1 revised to include expedite authorization requirement, General Instructions Sec 6.1 – Revise to “TI’s Web ASN Submission tool”, General Instructions Sec 7.1 – add “Raw wafer shipments”. Prior General Instructions Sec “7.1 b” and “7.1 d” deleted. Country shipping instructions – Updated express and forwarder account numbers where needed, added instruction to contact TI Global Routing Center for raw wafer/silicon shipments. TI transportation contacts updated.
D	ECO #2121817, 01/25/12, M. Murray, Steve Yager; Added new TI sites (MFAB, GFAB, TIEM), Updated carrier contacts, Added ASN information in General Information section, Revised order of TI sites within document, Lowered ocean threshold for intra-Asia to TI Taiwan
E	ECO #2123505, 04/09/12, M. Murray, Steve Yager; revised weight breaks for air vs ocean regionally, DHL Express account numbers revised in some lanes
F	ECO #2125647, 06/29/12, M. Murray, Steve Yager; Updated Philippines, Taiwan, and Japan routing info.
G	ECO# 2128172, 08/07/2012, Barbara Daniels; table of contents added, additional languages added, Mexico from US updated, TI Logistics contacts updated, replaced primary APL contact, removed Maine/Santa Clara tables and combined them with rest of US, updated TI-Germany routing table, changed weight breaks for USA, revised US domestic flow chart for non-capital, updated TI India table
H	ECO #2137079, 10/21/13, Barbara Daniels; Revised format, removed TI contacts, updated Routing Center contacts, updated account numbers, revised US domestic flow charts
I	ECO #21398906, 03/03/14, Barbara Daniels; Updated Routing Center phone number for Taiwan; revised Taiwan, Melaka, and Germany routing instructions; updated carrier contacts for Philippines and Japan.
J	ECO #2144836, 09/09/14, Chris Durant; Updates to Section 7.4
K	ECO #2145490, 10/02/14, Chris Durant; added in Import procedures updates and DHL contacts in India Sections 6.0 and 7.41
L	ECO #2147220, 12/10/14, Chris Durant; Updates to Section 7.2.1 and 7.2.2
M	ECO #2155967, 09/24/15, Perry Shields, Update section 2.9, 7.5
N	ECO #2156397, 02/16/16; ECM to correct revision letter issue in SAP/EDGE
O	ECO #2156481, Chris Durant, 02/22/16; Updated 7.2.1
P	ECO #2157146, 03/29/16, Perry Shields; Updated 7.4 Shipping to Texas Instruments (India) PVT LTD; 7.11 Shipping to Texas Instruments Taiwan Limited , Carrier references
Q	ECO#2157471, 04/11/16, G. Besa
R	ECO#2157830, 04/28/16, G. Besa
S	ECO#2168394, Frank Wang, 08/15, Updated TICD, TIJ, MFAB, TID, INDIA, TIEM, TIPICL, TITL

T	Elizabeth Wilson, 05/25, Updated purpose, information, instructions, ALL SITES, added Appendix
U	Elizabeth Wilson, 11/19, Added Spot Quote info, updated site matrix, removed account numbers
V	Elizabeth Wilson, 1/4, updated site matrix, added China Subcon flow and instructions
W	Kyra McLaren, 10/07, updated site matrix, Inbound Hazardous Goods, Spot Quote, TI North America, TI Maine, TI Santa Clara, TI China (excluding Chengdu), TI Chengdu, TID, TI India, TI Japan, TIGFAB, TI Taiwan
X	Kyra McLaren, 10/25, updated TI Taiwan Shipping Instructions
Y	Kyra McLaren, 1/27, updated contact information to reflect that APLL is now under KWE.
Z	Brandon Wang, 10/11/22, fixed table of contents, updated all the links, updated TI Taiwan Shipping Instructions, updated most countries' lane information